



**Sela®**  
the soul of sound

*Vikrampal*  
Vikrampal - Sela Artist

**Catalog 2026**

[www.selapercussion.com](http://www.selapercussion.com)

# Index

## 1 - Percussion

<b>Cajons</b>	<b>01</b>
Primera	02
Varios	03
Art Series	04
CaSela	05
CaSela Pro	06
CaSela Black Edition	07
CaSela Model Overview	08
Iconic Edition Cajons	09
Ions for Iconic Cajons	10
<b>Cajon Accessories</b>	<b>11</b>
Sela Tac Tic, Mini Cajon Set, Cajon Brushes, Snare Systems, Bags, Pads	
<b>Kalimbas</b>	
Mahogany	12
Solid Wood Kalimbas	13
Koa Kalimba + Pickup	14
<b>Percussion</b>	
Latin Percussion	15
Drumsticks, Brushes, Claves, Shakers	16
Shaman Drums	17
Frame Drums	18
Seed Chimes	New in 2026! 19
Seed Shakers	New in 2026! 20

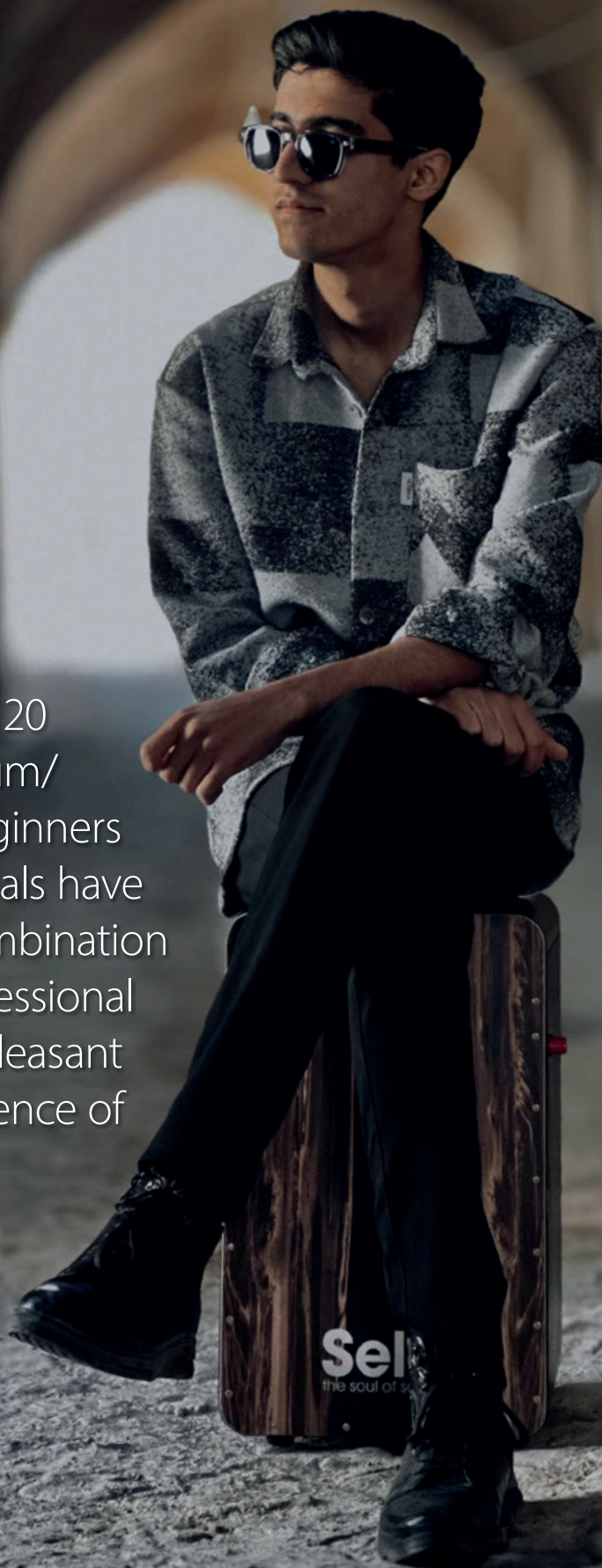
## 2 - World of Sounds

<b>Handpans</b>	<b>01</b>
Model Overview	02
Melody	03
Melody Stainless Steel	04
Harmony Stainless Steel	05
Unity	06
Harmony Phoenix	07
Harmony Ember Steel	08
Journey	New in 2026! 09
Majesty	10
Handpan Bags & Cases	11
Handpan Stands	New in 2026! 12
<b>Tongue Drums</b>	<b>13</b>
Melody Tongue Drums	New in 2026! 14
Unity Tongue Drums (432 Hz)	20
<b>Harmony Singing Bowls</b>	<b>21</b>
Harmony Singing Bowls	22
Singing Bowl Accessories	23
<b>Crystal Singing Bowls</b>	<b>24</b>
Crystal Frosted Singing Bowls	25
Crystal Chakra Singing Bowls	26
Crystal Singing Bowl Accessories	27
<b>Gongs</b>	<b>28</b>
Chau Gongs	New in 2026! 29
Wind Gongs	36
Symphonic Gongs	43
Gong Stands	44
Gong Bags	45
<b>Percussion</b>	
Noah Bells	46
Tingshas	47
Ocean Drums	48
Venti Chimes	New in 2026! 49
Harmony Chimes	50
Rain Maker	New in 2026! 51
<b>Point of Sales / Merchandise</b>	<b>52</b>



# Percussion

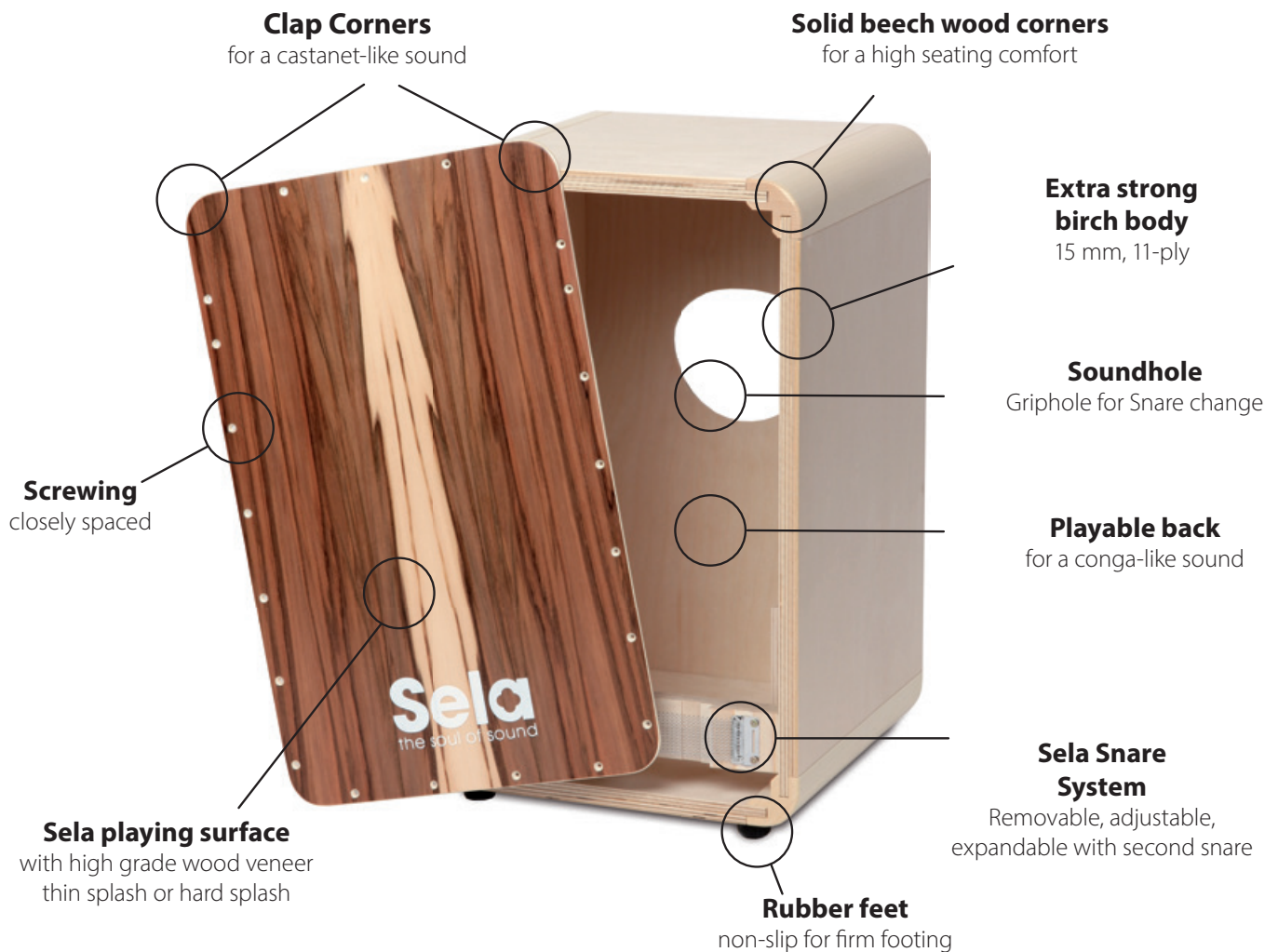
For more than 20 years, both drum/ percussion beginners and professionals have valued the combination of quality, professional sound and a pleasant playing experience of our products.





# Sela Cajons

**Cajons Made in Germany** – Convincing in sound and function





# Primera Cajons

The first choice for beginners

The Sela Primera Cajon offers first-class sound and quality Made in Germany to beginners. The affordable, pre-built cajon provides great fun right from the start. The robust body and the high-quality playing surface create a clear sound. The assertive bass and the crisp snare convince beginners as well as advanced players immediately. With the help of the unique Sela Snare System it is possible to adjust the sound to your personal preferences.

- Robust 12 mm birch body, 9-ply
- High quality birch playing surface
- Removable Sela snare system
- Individually adjustable snare sound
- Non-slip rubber feet
- Dimensions: 47 x 30 x 30 cm
- Weight: 4.2 kg



**Primera Natural**  
SE 117



**Primera Red**  
SE 165



**Primera Brown**  
SE 162



**Primera Black**  
SE 118

# Varios Cajons

Discover the Sela Sound

Do you have to make concessions in terms of quality with inexpensive Cajons? The answer is clearly: No! With the Varios, you get a Cajon that offers all the features of a professional Cajon at an unbelievable price. Sela proves that there is no need to compromise on sound, quality and features. Thanks to the Sela Snare System, it is possible to insert a second Sela snare. This gives you a rich snare sound, especially popular with flamenco players, Latin American grooves and musicians who prefer a „crisp“, assertive sound.

- Strong 15 mm birch body, 11-ply
- Modern design
- Mahogany playing surface
- Removable Sela snare system
- Preset clap corners
- Individually adjustable snare sound
- Non-slip rubber feet
- Exchangeable playing surface
- Dimensions: 47 x 30 x 30 cm
- Weight: 4.6 kg



**Varios Standard**  
SE 013



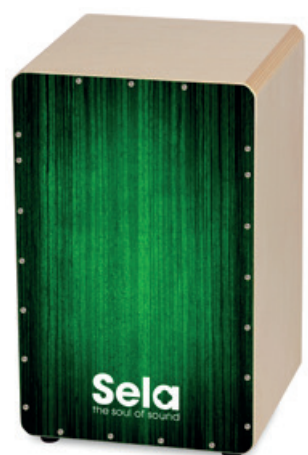
**Varios Red**  
SE 050



**Varios Brown**  
SE 051



**Varios Blue**  
SE 052



**Varios Green**  
SE 053



# Art Series Cajons

Design meets 'The Soul Of Sound'!

The Sela Art Series represents a new and fresh generation of colorful, extravagant, individual Cajons from the Sela family and features eye-catching and unique designs based on our successful Varios Cajon. With a Sela Art Series Cajon, you not only get a Cajon with a great and eye-catching playing surface design, but also one that offers all the features of a professional Cajon.

- Strong 15 mm birch body, 11-ply
- Modern design
- Mahogany playing surface
- Removable Sela snare system
- Preset clap corners
- Individually adjustable snare sound
- Non-slip rubber feet
- Exchangeable playing surface
- Dimensions: 47 x 30 x 30 cm
- Weight: 4.6 kg



**Urban**  
SE 174



**Sketch**  
SE 173



**Flower Power**  
SE 179

# Casela Cajons

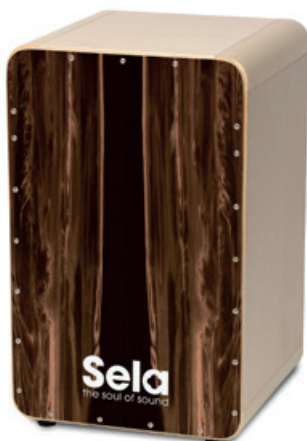
The professional snare cajon

The CaSela Snare Cajon is a professional cajon which combines Sela's many years of experience making cajons with highly modern production methods. This opens up entirely new visual and acoustic possibilities. The precisely finished components are "Made in Germany" and are of the highest quality. The sound of the Sela Snare System can be attenuated or amplified according to your taste. Additionally you can remove the snare easily, which turns your CaSela into a traditional Peruvian cajon without a snare.

- Strong 15 mm birch body, 11-ply
- Sela Thin Splash playing surface
- Fine wood veneer
- Removable Sela snare system
- Preset clap corners
- Individually adjustable snare sound
- Non-slip rubber feet
- Exchangeable playing surface
- Dimensions: 47 x 30 x 30 cm
- Weight: 6.0 kg



**Satin Nut**  
SE 002A



**Dark Nut**  
SE 105



**Red Dragon**  
SE 042



**Brown Dragon**  
SE 044



# Casela Pro Cajons

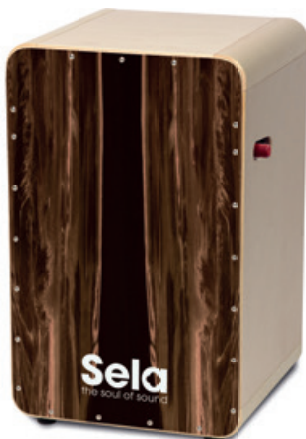
The professional snare cajon with snare on/off mechanism

The pro version with snare on/off mechanism! Experience an endless variety of sounds - convenient and easy. Simply press the snare lever back for turning the snare sound on or off. The ergonomically optimal position of the lever enables a lightning-fast switching while playing. The sound of the snare can be attenuated or amplified according to your taste. Thanks to the Sela Snare System, it is also possible to use a second snare.

- Strong 15 mm birch body, 11-ply
- Sela Thin Splash playing surface
- Fine wood veneer
- Sela on/off snare system
- Preset clap corners
- Individually adjustable snare sound
- Non-slip rubber feet
- Exchangeable playing surface
- Dimensions: 47 x 32 x 30 cm
- Weight: 6.5 kg



**Satin Nut Pro**  
SE 010



**Dark Nut Pro**  
SE 106



**Red Dragon Pro**  
SE 043



**Brown Dragon Pro**  
SE 045

# Casela Black Edition

Our popular Casela model dressed in black.

## Casela Black Standard

Professional Snare Cajon



**Dark Nut**  
SE 089



**Red Dragon**  
SE 046



**Brown Dragon**  
SE 048

## Casela Black Pro

Professional Snare Cajon with Snare On/Off-System



**Dark Nut Pro**  
SE 107



**Red Dragon**  
SE 047



**Brown Dragon**  
SE 048



# Casela Model Overview

## Casela Standard



**Satin Nut**  
SE 002A



**Dark Nut**  
SE 105



**Red Dragon**  
SE 042



**Brown Dragon**  
SE 044

## Casela Pro



**Satin Nut Pro**  
SE 010



**Dark Nut Pro**  
SE 106



**Red Dragon Pro**  
SE 043



**Brown Dragon Pro**  
SE 045

## Casela Black



**Dark Nut**  
SE 089



**Red Dragon**  
SE 046



**Brown Dragon**  
SE 048

## Casela Black Pro



**Dark Nut Pro**  
SE 107



**Red Dragon Pro**  
SE 047



**Brown Dragon Pro**  
SE 049

# Iconic Edition Cajons

Our revolutionary modular flagship cajon

The Iconic Edition is a game-changer for percussionists, combining three instruments in a single cajon and allowing you to customize its sound to your preference. The cajon comes equipped with two íons, while the other three additional models are available for individual purchase.

- Cajon with two interchangeable drum heads (**íons**)
- Main playing surface: Limba, Ziricote or Oak Roots
- Two íon drum heads included: Cuban and Turkish
- 5 different íon drum heads available:  
Cuban, Turkish, Peruvian, Guinean and Kenyan
- Internal sound boxes for enhanced íon sounds
- Soundhole with bass output enhancer
- Ergonomically designed birch body
- Snare system: 4 tunable snare strings (2 on each side)
- Individually tubable snare and íon sound
- Non-slip, anti vibration rubber feet
- Dimensions: 48 x 32 x 30 cm, Weight: 6 kg



**Iconic Cajon Limba**  
SE-IC2



**Iconic Cajon Ziricote**  
SE-IC1



**Iconic Cajon Oak Roots**  
SE-IC3



**Each Iconic Cajon features two íon drum heads, one on each side-panel.**

The **Cuban** íon is made from leather and inspired by afro-cuban percussion.

The green, **Turkish** íon is darbuka inspired and is made from synthetic skin.

Other íon models are available for purchase and can be switched out individually.

**íon overview ▶**



# Iconic Edition íons

Interchangeable drum heads for your Iconic Cajon



**Peruvian Ion SE-ION1** This drum head is a nod to the Peruvian origins of the cajon, which came into being when African slaves used upturned wooden crates and containers to mimic drums. It's made from natural birch wood, allowing the Peruvian drum head to be matched with the faceplate of your cajon to ensure a harmonious sound. The Peruvian produces an impressively crisp "pop" when slapped. This drum head is extremely sensitive and responds outstandingly even with the lightest of touches. Remember, this íon is the most sensitive in our range and a light touch is enough to produce an exceptional response from the Peruvian. An excessive force is not recommended.



**Cuban Ion SE-ION2** Inspired by the sounds of Afro-Cuban percussion, the Cuban drum head produces a sound similar to that of a bongo. Made from goatskin, it is 100% natural and is treated and cured by hand. Because this is a natural product, no two pieces are the same. This means that every skin will inherently have its own unique characteristics which can be seen in the subtle but visible differences in thickness and variations in colour. We recommend applying vegetable fat in order to maintain its flexibility and improve its durability. It is this flexibility that allows the player to experiment with different frequencies and to adjust the drum head to suit individual tastes and playing styles.



**Turkish Ion SE-ION3** Rooted in the sounds of Turkish percussion and inspired by the darbuka, this drum head features a skin made from synthetic material with green finish. This material is widely used in professional-level instruments these days due to the fact that it is unaffected by climatic conditions such as humidity, which results in a loss of tension. This type of skin is very lightweight by nature and must be protected against sharp objects and unintended impacts. However, the thinness of the Turkish drum head is also its greatest advantage as it boasts exceptional responsiveness and sound projection, producing full and robust mid-range tones and strong, bright high end. For this reason, it lends itself well to a playing style known as the "Turkish technique", although it can be played in numerous different ways.



**Kenyan Ion SE-ION4** Inspired by the "mshondo" – a tall, slender drum played by the Giriama tribe which produces a lovely, rounded tone. Our interpretation of this tribal drum is made from unshaved goat skin to produce a lower frequency response. As such, it contrasts beautifully with the other drum heads in our range and allows for the option of a very satisfying counterpoint to both the cajon and the other drum heads when playing. In terms of its aesthetic and its sound, every player will want the Kenyan in their collection.



**Guinean Ion SE-ION5** This West African country is a hotbed of music, and home to the world-renowned "Les Ballets Africains" which has showcased some of Africa's finest drummers over the past three-quarters of a century. Central to Guinean music is the djembe, which can be made from cow skin or goatskin. Our Guinean drum head is a tribute to the latter, producing a rounder tone than a bleached goatskin drum head (such as the Cuban). As is typically thicker than bleached goatskin, it can also be played far more vigorously and is recommended both for its distinct frequency response and for its robustness.

# Sela Cajon Accessories



## Mini Cajon Shaker Set

SE 108

- Special Mini Cajon design
- Clear, assertive sound
- High-quality maple wood
- 3 different sounds: Soft, Medium and Hard
- Dimensions: 6 x 4 x 3.8 cm



## Sela Tac Tic

SE 055

- Two high-speed wooden castanets
- Adjustable brass jingles with mute function
- Dual chamber shaker for varying sounds
- Solid wooden body in black
- Thumb loop for secure hold
- Incl. velcro strap for fastening
- Dimensions: 17 x 5 x 7 cm



## Cajon Bag Black

SE 005

- Tear resistant nylon bag
- Optimal protection
- High-quality zipper
- Practical side compartment
- Carrying straps and removable shoulder straps
- Extra reinforced bottom
- Suitable for Cajons up to max. 30 x 31 x 50 cm



## Cajon Backpack

SE 090

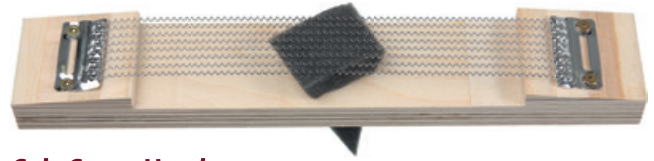
- Water resistant nylon bag
- 6 mm thick padding
- Padded backpack straps
- High-quality zipper
- Separate compartment
- Rubberized bottom
- Comfortable strap handle
- Suitable for cajons up to max. 50 x 30 x 30 cm



## Cajon Pad Black

SE 006

- Optimal Cajon seat support
- Size: 26 x 26 cm (10,2" x 10,2")
- Prevents slipping when tilting
- Ideal seating comfort even when playing for a long time



## Sela Snare Head

SE 007

For Primera, Varios, Art Series, Kits, CaSela and CaSela Pro



## Cajon Brush 110

SE 065

Length: 34 cm, 110 fibres



## Cajon Brush 180

SE 035

Length: 35 cm, 180 fibres



## Cajon Brush 250

SE 036

Length: 35 cm, 250 fibres

- Handle made of solid maple
- Nylon fibres
- Adjustable hardness
- Rubber coating
- Rubber bottom cap



# Mahogany Kalimbas - Hollow

Relaxing sound pleasure for melodic thumb artists!

These Kalimbas are made of high quality mahogany wood. The hollow body amplifies the low frequencies, creating a full, clear and warm sound with a fascinating resonance. The high-quality metal keys are tuned in C major. The stamped notes on the sound reeds make the Kalimbas suitable for beginners as well as advanced players.

- Number of keys: 10 / 17
- Range 10 keys: c' - e'' (C4 - E5)
- Range 17 keys: c' - e''' (C4 - E6)
- Tuning: C major
- Wood: Mahogany
- Size 10 keys: 21 x 16 x 7 cm
- Size 17 keys: 21,5 x 16 x 7,5 cm
- Padded carrying bag with loop
- Incl. cloth bag & tuning hammer



## Mahogany 10 keys



**Natural 10**  
SE 240



**Black 10**  
SE 241



**Red 10**  
SE 242



**Green 10**  
SE 243



**Blue 10**  
SE 244

## Mahogany 17 keys



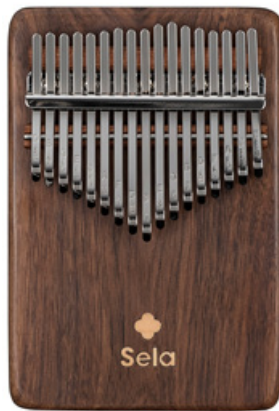
**Natural 17**  
SE 245

# Solid Series Kalimbas

Elegant solid wood kalimbas

## Black Walnut Kalimbas

- Number of keys: 17 / 21
- Range: c' - e''' (C4 - E6) / f - e''' (F3 - E6)
- Tuning: C major
- Wood: Black Walnut
- Finish: Natural matt



**Black Walnut 17**  
SEKL17WS



**Black Walnut 21**  
SEKL21WS

## Maple Kalimbas

- Number of keys: 17 / 21
- Range: c' - e''' (C4 - E6) / f - e''' (F3 - E6)
- Tuning: C major
- Wood: Maple
- Finish: Natural glossy



**Maple 17**  
SEKL17MS



**Maple 21**  
SEKL21MS

## Sapele Kalimba

- Number of keys: 17
- Range: c' - e''' (C4 - E6)
- Tuning: C major
- Wood: Sapele
- Finish: Natural matt



**Sapele 17**  
SEKL17SS



# Koa Kalimba with Pickup

Perfect Kalimba for live and recording sessions

The Sela Kalimba 17 Hollow Koa has a hollow body made of fine koa wood. Koa is a rare species of acacia that grows only in Hawaii and is often used to build instruments because of its balanced sound. Like a guitar or ukulele, the hollow body with resonance hole provides a powerful sound. In addition, this model has a pickup through which the kalimba can be connected to a PA system for live performances or to a recording device for recordings.

- Number of keys: 17
- Range: c' - e''' (C4 - E6)
- Tuning: C major
- Piezo pickup
- Wood: Koa
- Finish: Glossy
- Incl. padded carrying bag with loop
- Incl. tuning hammer



**Koa 17 + Pickup**  
SEKL17P-KO



# Latin Shakers

## Sela Maracas

1 Pair of Maracas with oak handles

Sela Maracas are your ultimate rhythm-makers, designed to elevate your music with a touch of Latin flair. Featuring an oak wood handle, plastic head, and metal sand filling, they deliver a rich, crisp sound, perfect for enhancing Latin music, jazz, rock, and more. The oak handle adds elegance, and their balanced weight ensures effortless rhythm maintenance. Whether you're a professional musician or a casual player, Sela Maracas are your perfect musical companion. Transport your audience to the vibrant streets of Latin America with these authentic shakers.

- Head material: Plastics
- Handle: Oak wood
- Filling: Metal sand
- Head diameter: 90 mm



**Sela Maracas**  
SEPMC1

## Sela Cabasas

Versatile shakers available in two sizes

Introducing the Sela Cabasa rhythm shakers: Meticulously crafted to elevate your musical experience, these shakers feature a sturdy wooden handle covered with foam rubber and metal bead chains wrapped around their "heads". Constructed from pine wood, the Sela Cabasas deliver a distinctive and captivating sound, making them an invaluable addition for musicians and educators. Unleash your creativity and explore a world of new rhythms with the Sela Cabasa by your side.

- Material: Pine wood
- Handle: Foam
- Metal beads
- Diameter: 60 or 115 mm



**Cabasa 60**  
SEPCAB1



**Cabasa 115**  
SEPCAB2



# Percussion Accessories

## Drumsticks



### 5A Maple

SE 270

- Size: 5A
- Diameter: 14.5 mm
- Length: 405 mm
- Head Shape: Acorn

Set 5A Maple (6 pair) SE 271

### 5B Maple

SE 272

- Size: 5B
- Diameter: 15.3 mm
- Length: 407 mm
- Head Shape: Oval

Set 5B Maple (6 pair) SE 273

### 7A Maple

SE 274

- Size: 7A
- Diameter: 14.2 mm
- Length: 395 mm
- Head shape: Acorn

Set 7A Maple (6 pair) SE 275

## 2-Tone Claves



### Rosewood 20 mm

SE 281

- Diameter: 20 mm
- Length: 190 mm & 200 mm
- Material: Rosewood, matte

### Rosewood 25 mm

SE 284

- Diameter: 25 mm
- Length: 200 mm & 215 mm
- Material: Rosewood, matte



### Acacia 20 mm

SE 282

- Diameter: 20 mm
- Length: 190 mm & 200 mm
- Material: Acacia, matte

### Acacia 25 mm

SE 285

- Diameter: 25 mm
- Length: 200 mm & 215 mm
- Material: Acacia, matte



### Beech 20 mm

SE 283

- Diameter: 20 mm
- Length: 190 mm & 200 mm
- Material: Beech, matte

### Beech 25 mm

SE 286

- Diameter: 25 mm
- Length: 200 mm & 215 mm
- Material: Beech, matte

## Other Accessories



### Straw Brushes 180

SE 276

- 180 Straw fibres per brush
- Length: 360 mm, Diameter: 25 mm
- Handle with Pro Grip Rubber
- Balanced weight distribution
- Rubber bottom cap



### Mini Shaker Set

SE 279

- Diameter: 35 mm
- Length: 60 mm
- Material: Beech, oiled
- Sounds: Soft, Medium, Hard

# Shaman Drums

Traditional, handcrafted ritual frame drums from India

Experience the ancient power of sound with our Shaman Drums, handcrafted in India. Featuring a durable wood frame and your choice of buffalo or goat skin, each drum produces deep, resonant tones perfect for shamanic rituals, meditation, and healing practices. The natural materials and unique craftsmanship ensure every drum is a one-of-a-kind tool for spiritual connection and self-discovery. Let the rhythm guide your journey.

- Handmade in India
- Wooden frame
- Drumhead: Goat or buffalo skin
- Handle made from natural skin
- Including wooden mallet
- Available in sizes from 35 to 55 cm



## Goat Skin

Item-No.	Size
SESHD14G	Ø 35 cm / 14"
SESHD16G	Ø 40 cm / 16"
SESHD18G	Ø 45 cm / 18"
SESHD20G	Ø 50 cm / 20"
SESHD22G	Ø 55 cm / 22"



## Buffalo Skin

Item-No.	Size
SESHD14B	Ø 35 cm / 14"
SESHD16B	Ø 40 cm / 16"
SESHD18B	Ø 45 cm / 18"
SESHD20B	Ø 50 cm / 20"
SESHD22B	Ø 55 cm / 22"





# Frame Drums

Revolutionary tuning mechanism by using air pressure

Discover the future of drumming with our revolutionary Frame Drums, designed to be easily tuned by regulating air pressure. This innovative technology allows you to adjust the drum's pitch and tone with precision, offering a customizable sound experience for every session. Perfect for musicians and spiritual practitioners alike, these drums combine traditional craftsmanship with cutting-edge functionality.

- Handmade in Europe
- Wooden frame
- Drumhead: Goat skin
- Grip hole on models 30, 35 and 40
- Available in sizes from 30 to 50 cm
- Including air pump



Item-No.	Size
SEFD1-30	Ø 30 cm / 12"
SEFD1-35	Ø 35 cm / 14"
SEFD1-40	Ø 40 cm / 16"
SEFD1-45	Ø 45 cm / 18"
SEFD1-50	Ø 50 cm / 20"

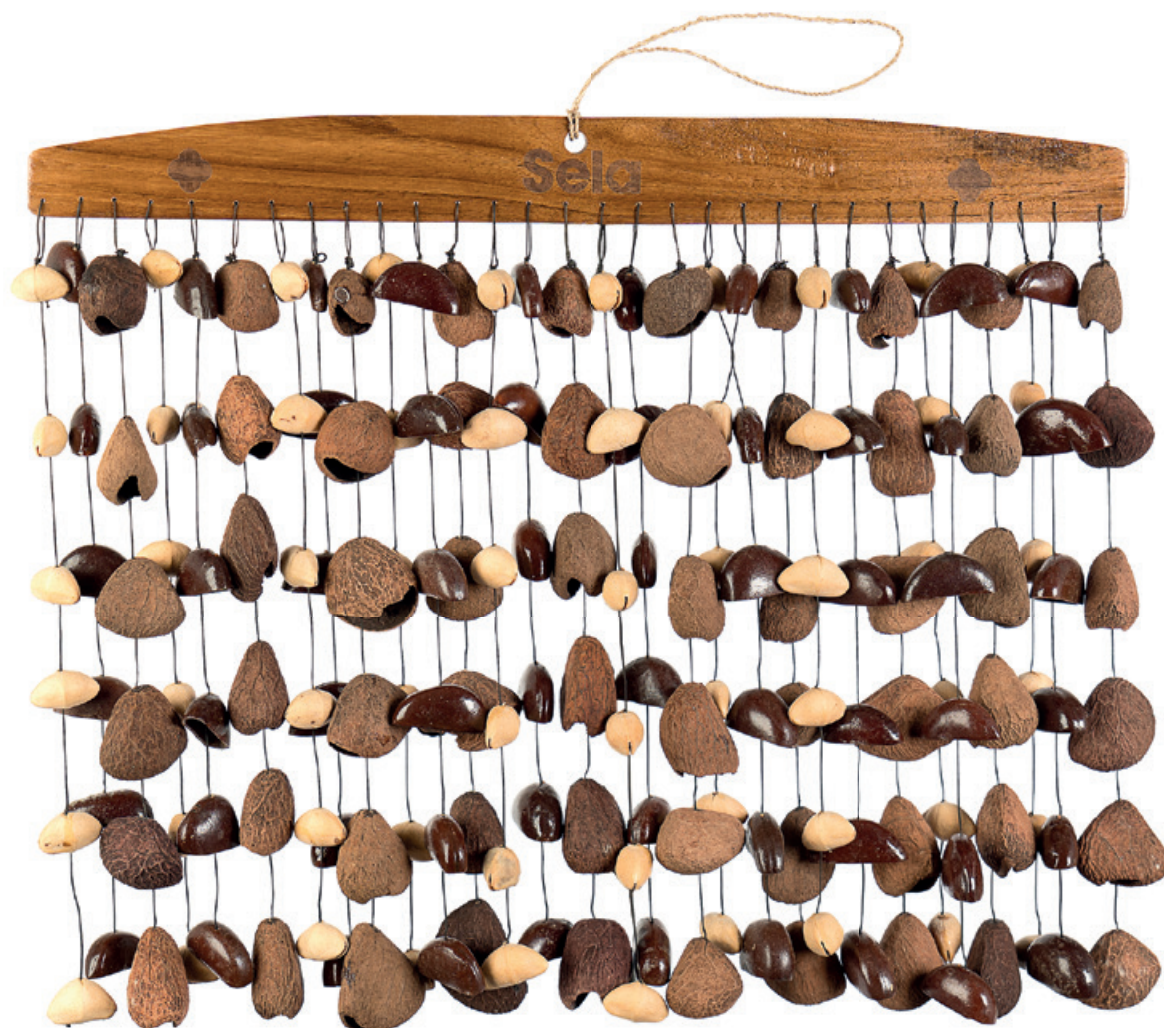


# Seed Chimes

The sound of natural percussion

The Sela Seed Chimes are natural sound instruments that create a calm and atmospheric mood with their gentle, organic tones. Made from real seeds and wood, their sound evokes wind, water, and subtle natural textures. They are ideal for meditation, sound healing, yoga, ambient music, or as a delicate effect in acoustic and percussion-based arrangements.

- Chimes width:  $\approx$  50 cm
- Chimes Frame: Teak wood
- 6 seeds per string
- Handcrafted in Indonesia



SESDC6  
Mixed Seeds



SESDC1  
Kenari  
Ø 30 mm



SESDC2  
Bendo  
Ø 40 mm



SESDC3  
Pangli  
Ø 55 mm



SESDC4  
Pala  
Ø 25 mm



SESDC5  
Kenari XL  
Ø 36 mm



# Seed Shakers

The sound of natural percussion

The Sela Seed Shakers are natural percussion instruments that produce warm, organic sounds with a subtle and earthy character. Made from real seeds and natural materials, they deliver a soft, controlled response that blends seamlessly into a wide range of musical settings. They are ideal for meditation, sound healing, acoustic performances, ambient music, or as a gentle rhythmic layer in percussion-based arrangements.

- 4 or 6 seeds per string
- Shaker rope: Jute
- Including bag
- Handcrafted in Indonesia



**SESDS1**  
**Kenari 4-row**  
Ø 30 mm



**SESDS2**  
**Bendo 4-row**  
Ø 40 mm



**SESDS3**  
**Pangi 4-row**  
Ø 55 mm



**SESDS4**  
**Pala 4-row**  
Ø 25 mm



**SESDS5**  
**Kenari 6-row**  
Ø 30 mm



**SESDS6**  
**Bendo 6-row**  
Ø 40 mm



**SESDS7**  
**Pangi 6-row**  
Ø 55 mm



**SESDS8**  
**Pala 6-row**  
Ø 25 mm

# World of Sounds

A journey to your inner music. Inspired by our authentic range of instruments that attain body, soul and mind.





# Handpans

Handmade and unique

The handpan is the perfect combination of percussion and melody instrument. It consists of two steel bowls. As part of their manufacturing process, the halves are elaborately hammered by hand. This creates dents and a small hill in the middle of the body. These surfaces become the various sound fields. The central note is located in the middle and is surrounded by a circle of eight further notes.

Sela Handpans convince with their bright, long-lasting sound. The unique, soft, ethereal and mysterious sound of this instrument captivates everyone and takes the listener on a spiritual journey. It can be used perfectly as a musical accompaniment for spiritual activities such as yoga or meditation.

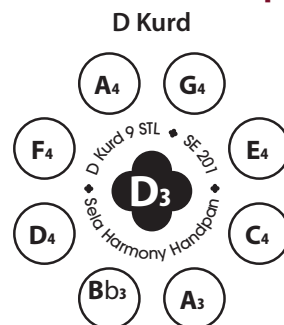
The sound fields respond easily. Even the smallest nuances can be heard while playing. An expressive and detailed performance is the result. It impresses with quality and sound on a high level. The handpan has a pleasant resonance vibration across all tones. It immediately convinces with its long-lasting sound. The tones are cleanly separated from each other. Sela Handpans are professional tuned.

A high-quality and padded bag is included in the scope of delivery. Thanks to its good padding, it provides optimum protection during transport. The tear-resistant nylon bag can be carried easily by hand with the two handles or comfortably as a backpack with the adjustable shoulder straps. Small accessories such as a metronome can be stored in the practical outer compartment.

**Top view**  
Sound fields



**Tone scheme example**



**Bottom view**  
Soundhole



# Sela Handpans

## Model Overview



### **Melody**

Steel, 440 Hz

The basic handpan,  
ideal for beginners.



### **Melody STL**

Stainless Steel, 440 Hz

The entry level handpan  
in stainless steel.



### **Harmony STL**

Stainless Steel, 440 Hz

The topseller! Wide tonal range,  
soft and long lasting sound.



### **Unity**

Stainless Steel, 432 Hz

The Harmony STL quality  
tuned in 432 Hz.



### **Harmony Phoenix**

Stainless Phoenix Steel, 440 Hz

The synergy of stainless and nitrided  
steel handpans.



### **Harmony Ember**

Stainless Ember Steel®, 440 Hz

The handpan made from  
genuine Ember Steel®.



### **Journey**

Stainless Steel, 440 Hz

The travel handpan, reduced  
diameter with maximum sound.



### **Majesty**

Stainless Steel, 440 Hz

The flagship, extended scales,  
perfect sound and tones.



# Melody Handpan

The basic Handpan, perfect for beginners.

Sela Melody Handpans offer an outstandingly affordable entry into the world of handpans without having to make any compromises in sound and workmanship. They are partly machine-made and consist of nitrided steel. Nitriding hardens the surface of the handpan, which gives it a percussive sound that decays much faster than that of stainless steel handpans. Due to their shorter sustain, nitrided handpans are also ideal for fast playing, as the notes are more clearly separated from each other and overlap less. This property is also very beneficial for beginners, as improvising and playing by gut feeling is much easier. Sela Melody handpans have a matt, dark blue finish, which gives them a subtle and fascinating look.

- Handcrafted masterpiece
- Professionally tuned
- Clear and percussive sound
- Removable rubber rim
- Engraved logo
- Includes padded bag with rucksack straps
- Diameter: 57 cm, Weight: 4.6 kg
- 9 Tones, 440 Hz
- Dark blue/indigo, matte finish



SE 220	<b>D Kurd</b> D3/ A3, Bb3, C4, D4, E4, F4, G4, A4
SE 221	<b>D Amara</b> D3/ A3, C4, D4, E4, F4, G4, A4, C5
SE 308	<b>C# Kurd</b> C#3/ G#3, A3, B3, C#4, D#4, E4, F#4, G#4
SE 309	<b>E Kurd</b> E3/ B3, C4, D4, E4, F#4, G4, A4, B4

# Melody Handpan - Stainless Steel

The entry level handpan in stainless steel.

Sela Melody Handpans offer an outstandingly affordable entry into the world of handpans without having to make any compromises in sound and workmanship. They are partly machine-made and consist of a stainless steel alloy. Handpans made of stainless steel have a much longer sustain than models made of nitrided steel and are therefore particularly suitable for slow, relaxing and meditative playing. At the same time, they are very easy to clean and well suited for beginners, as their fast, sensitive response requires less effort to play. Sela Melody handpans have a matt silver finish, which gives them a subtle and fascinating look.

- Handcrafted masterpiece
- Professionally tuned
- Made from stainless steel
- Clear and mellow sound with longer sustain
- Removable rubber rim
- Engraved logo
- Includes padded bag with rucksack straps
- Diameter: 57 cm, Weight: 4.6 kg
- 9 Tones, 440 Hz
- Silver, matte finish



SE 226	<b>D Kurd</b>	D3/ A3, Bb3, C4, D4, E4, F4, G4, A4
SE 227	<b>D Amara</b>	D3/ A3, C4, D4, E4, F4, G4, A4, C5



# Harmony Handpan - Stainless Steel

All you wish for in a handpan: Wide variety of scales, great tonal range

Sela Harmony Handpans are completely handmade, perfectly tuned and made of nitrided steel. Nitriding hardens the surface of the handpan, giving it a percussive sound that resonates much faster than stainless steel handpans. Due to their shorter sustain, nitrided handpans are primarily suitable for fast playing, as the notes are more clearly separated from each other and overlap less. Sela Harmony handpans have a matt, grey-blue finish, which gives them a mysterious, fascinating look.

- Handcrafted masterpiece
- Professionally tuned
- Clear and mellow sound with long sustain
- Durable stainless steel material
- Removable rubber rim
- Engraved logo
- Includes padded bag with rucksack straps
- Diameter: 57 cm, Weight: 5.2 kg
- 9 Tones, 440 Hz
- Gold / bronze, matte finish



SE 201	<b>D Kurd</b> D3/ A3, Bb3, C4, D4, E4, F4, G4, A4
SE 202	<b>D Amara</b> D3/ A3, C4, D4, E4, F4, G4, A4, C5
SE 207	<b>C# Kurd</b> C#3/ G#3, A3, B3, C#4, D#4, E4, F#4, G#4
SE 208	<b>C# Amara</b> C#3/ G#3, B3, C#4, D#4, E4, F#4, G#4, B4
SE 211	<b>F Low Pygmy</b> F3/ G3, G#3, C4, D#4, F4, G4, G#4, C5
SE 213	<b>D Sabye</b> D3/ G3, A3, B3, C#4, D4, E4, F#4, A4

SE 222	<b>B2 Amara</b> B2/ F#3, A3, B3, C#4, D4, E4, F#4, A4
SE 225	<b>Bb2 Aegean</b> Bb2/ D3, F3, A3, Bb3, D4, E4, F4, A4
SE 300	<b>Bb2 Amara</b> Bb2/ F3, Ab3, Bb3, C4, Db4, Eb4, F4, Ab4
SE 301	<b>C Amara</b> C3/ G3, Bb3, C4, D4, Eb4, F4, G4, C5
SE 302	<b>E Equinox</b> E3/ G3, B3, C4, D4, E4, F#4, G4, B4
SE 303	<b>E Kurd</b> E3/ B3, C4, D4, E4, F#4, G4, A4, B4

# Unity Handpan - Stainless Steel

Everything you love about our Harmony Series but in 432 Hz

Sela Unity handpans are identical in construction to the stainless steel models in the Harmony series, but are tuned to the fundamental frequency of 432 Hz (concert pitch A). As they do not harmonise with conventionally tuned instruments (440 Hz), they are mainly suitable as solo instruments and are mainly used for esoteric or sound-therapeutic purposes.

- Handcrafted masterpiece
- Professionally tuned
- Clear and mellow sound with long sustain
- Durable stainless steel material
- Removable rubber rim
- Engraved logo
- Includes padded bag with rucksack straps
- Diameter: 57 cm, Weight: 5.2 kg
- 9 Tones, **432 Hz**
- Gold / bronze, matte finish

432 Hz



SE 215	<b>C# Kurd</b> C#3/ G#3, A3, B3, C#4, D#4, E4, F#4, G#4
SE 223	<b>B2 Amara</b> B2/ F#3, A3, B3, C#4, D4, E4, F#4, A4
SE 305	<b>D Amara</b> D3/ A3, C4, D4, E4, F4, G4, A4, C5



# Harmony Handpan - Phoenix Steel

Phoenix Steel is a synergy of nitrided and stainless steel and offers the best of both worlds.

Sela Harmony Phoenix Steel Handpans are handmade and consist of a special, very stable stainless steel. Their sustain is between handpans made of nitrided and stainless steel. This particularly well-balanced sustain and warm, controlled sound make Phoenix Steel handpans true all-rounders that can be played slowly and meditatively as well as quickly and percussively. They thus offer the best of both worlds and are also comparatively easy to care for. Unlike other Sela handpans, the Phoenix Steel Handpans have ten tone fields instead of the usual nine. This offers even more possibilities for playing a wide variety of melodies.

- Handcrafted masterpiece
- Extended tonal range (10 Tones)
- Clear and warm sound with balanced sustain
- Durable phoenix steel material
- Removable rubber rim
- Engraved logo
- Includes padded bag with rucksack straps
- Diameter: 57 cm, Weight: 5.2 kg
- 10 Tones, 440 Hz
- bronze, matte finish



SE 320 | **D Kurd 10** D3/ A3, Bb3, C4, D4, E4, F4, G4, A4, C5

SE 321 | **D Amara 10** D3/ A3, C4, D4, E4, F4, G4, A4, C5, D5

# Harmony Handpan - Ember Steel

The handpan made from genuine Ember Steel®.

Sela Harmony Ember Steel handpans combine the popular original Ember Steel with the familiar shape of Sela Harmony handpans. They are handmade and consist of a special, very sturdy stainless steel. Their release time lies between nitrided steel handpans and stainless steel models. This particularly balanced sustain and the warm, controlled sound make Ember Steel handpans real all-rounders that can be played slowly and meditatively as well as fast and percussively. They therefore offer the best of both worlds and are also comparatively easy to care for, as the steel alloy is well protected against external influences such as hand perspiration and dirt. During production, our Ember Steel models are given a beautiful brownish finish. With their ten tone fields, the Sela Harmony handpans made of Ember Steel offer even more playful possibilities for a wide variety of melodies.

- Handcrafted masterpiece
- Extended tonal range (10 Tones)
- Clear and warm sound with balanced sustain
- Original Ember steel material
- Removable rubber rim
- Engraved logo
- Includes padded bag with rucksack straps
- Diameter: 57 cm, Weight: 5.7 kg
- 10 Tones, 440 Hz
- Brown/bronze, matte finish



SE 340 | **D Kurd 10** D3/ A3, Bb3, C4, D4, E4, F4, G4, A4, C5

SE 341 | **D Amara 10** D3/ A3, C4, D4, E4, F4, G4, A4, C5, D5



# Journey Handpan

Our Harmony Handpan in reduced size. Your perfect travel companion.

Journey handpans are more compact and travel-friendly versions of our high-quality Harmony handpans. They are also made of high-quality stainless steel, completely handmade and intricately tuned by some of the best handpan builders in the world. Stainless steel handpans have a significantly longer sustain than nitrided handpans, making them particularly suitable for slow, relaxing and meditative playing. At the same time, they are very easy to care for. The Sela Journey Stainless Steel D Kurd 9 has a matt gold finish, giving it an elegant, high-quality look.

- Extra small 47 cm diameter
- Handcrafted masterpiece
- Clear and pure soft sound
- Durable stainless steel material
- Removable rubber rim
- Engraved logo
- Includes padded bag with rucksack straps
- Diameter: 47 cm, Weight: 5.2 kg
- 9 Notes, 440 Hz
- Stainless steel, satin gold finish



SE 228 | **D Kurd** D3/ A3, Bb3, C4, D4, E4, F4, G4, A4

# Majesty Handpan

The soundwonder for professional artists

Sela Majesty Stainless Steel Handpans are made of the highest quality stainless steel and are handcrafted and tuned by some of the best handpan makers in the world. They sound even better than our popular Harmony Stainless Steel models. Stainless steel handpans have a much longer sustain than nitrided handpans and are therefore particularly suitable for slow, relaxing and meditative playing.

- Extended scales, also available with bottom notes
- Handcrafted masterpiece
- Professionally and perfectly tuned
- Highest quality stainless steel material
- Bright and long-lasting sound at highest level
- Durable stainless steel material
- Engraved logo
- Includes padded bag with rucksack straps
- Hand-braided handpan rope
- Diameter: 58 cm, Weight: 5.85 kg
- 9 or more Tones, 440 Hz
- Bronze, mirror finish



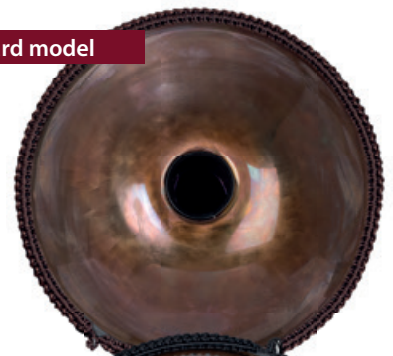
## Standard models

- SE 217 **B Celtic Minor 9** B2 / B3, C#4, D4, E4, F#4, G4, B4, C#5  
 SE 313 **B Amara 9** B2 / F#3, A3, B3, C#4, D4, E4, F#4, A4

## Models with bottom notes

- SE 307 **C# Pygmy 9+8** Top Notes: C#3 / F#3, G#3, A3, C#4, E4, F#4, G#4, A4  
 Bottom Notes: D3, E3, B3, D4, B4, C#5, D5, E5  
 SE 310 **D Amara 9+4** Top Notes: D3 / A3, C4, D4, E4, F4, G4, A4, C5  
 Bottom Notes: D5, E5, F5, G5  
 SE 311 **D Kurd 9+4** Top Notes: D3 / A3, Bb3, C4, D4, E4, F4, G4, A4  
 Bottom Notes: F3, G3, C5, D5  
 SE 312 **C# Kurd 9+4** Top Notes: C#3 / G#3, A3, B3, C#4, D#4, E4, F#4, G#4  
 Bottom Notes: E3, F#3, B4, C#5  
 SE 314 **F2 Pygmy 9+8** Top Notes: F2 / F3, G3, Ab3, C4, Eb4, F4, G4, Ab4  
 Bottom Notes: C3, Eb3, Bb3, Db4, C4, Db5, Eb5, F5

## Standard model



## Bottom note model





# Handpan Bags and Cases

Keep your handpan safe and clean



## Handpan Hardcase

SEHPHC1

- Outer material: EVA
- Inner padding: nap foam
- Detachable backpack straps
- High-quality and lockable zipper
- Ergonomic carrying handle



## Handpan Bag Black

SE 183

- Padded nylon
- Adjustable shoulder straps
- Outer compartment



## Handpan Bag Grey

SE 219

- Padded nylon
- Modern Design
- Adjustable shoulder straps

# Handpan Accessories

Helpful things for your handpan journey



**New in 2026**

## **Handpan Stand Pro** SEHPST1

- Sturdy metal construction
- Adjustable height from 68 to 100 cm
- Foam support surfaces
- Foldable for easy transportation
- Packing dimensions: 56 x 10 x 11 cm



## **Handpan Stand Large**

SE 198

- Beech wood
- Resistant and light
- Foam support surfaces
- Height: 87 cm



## **Handpan Stand Medium**

SE 199

- Beech wood
- Resistant and light
- Foam support surfaces
- Height: 61 cm





# Tongue Drums

Meditative and harmonic sounds

Sela Tongue Drums are handy steel tongue drums with diameters from 7.5 centimetres to approx. 35 centimetres. With their warm and soothing sound, they are suitable for relaxation in everyday life as well as for the early musical education of children. The tone fields create typical sounds when playing Sela tongue drums, which enchant the listener and transport them to a land of peace and harmony.

Since all notes of the Tongue Drums fit together harmoniously, a melodious sound is always created without any "wrong" notes. Therefore, this instrument is not only recommended for experienced music lovers and professional sound therapists, but especially for beginners without any previous musical knowledge.

To get you started right out of the box, each Sela Tongue Drum comes with one or two high-quality mallets. The tone fields can also be struck with the fingers. Thanks to their compact size, the Sela Tongue Drums can be stored anywhere - at home, in the office, in the yoga studio or in your luggage. For safe transport, a practical cotton or rucksack bag is included. Rubber feet ensure a secure stand, and a rubber ring protects the outer edge of the tongue drum from scratches and dents.



# Melody Mini Tongue Drum 3"

Meditative and harmonic sounds

The Sela Melody Mini Tongue Drum 3" is a handy steel tongue drum and with a diameter of just 7.5 centimeters the smallest model in our range. With its warm and soothing sound, it is suitable for relaxation in everyday life as well as for the early musical education of children. Since all six tone fields of this model are on the pentatonic scale, a harmonic melody is always created when playing, without any "wrong" notes. Therefore, this instrument is recommended not only for experienced music lovers and professional sound therapists, but especially for beginners with no previous musical knowledge.

- 6 tone fields
- Material: steel
- High quality workmanship
- Diameter: 7,5 cm (3")
- Rubber bottom
- Incl. 1 mallet



**Black**  
SETD3M1

**Purple**  
SETD3M2

**Gold**  
SETD3M3

SETD3M1	<b>A Major Pentatonic</b>	A5, B5, C#6, E6, F#6, A6	<b>Black</b>
SETD3M2	<b>A Major Pentatonic</b>	A5, B5, C#6, E6, F#6, A6	<b>Gold</b>
SETD3M3	<b>A Major Pentatonic</b>	A5, B5, C#6, E6, F#6, A6	<b>Purple</b>





# Melody Tongue Drum 4"

Meditative and harmonic sounds

The Sela Melody Tongue Drum 4" is a handy steel tongue drum and with a diameter of 10 centimeters the second smallest model in our range. With its warm and soothing sound, it is suitable for relaxation in everyday life as well as for the early musical education of children. Therefore, this instrument is recommended not only for experienced music lovers and professional sound therapists, but especially for beginners with no previous musical knowledge.

- 6 to 8 tone fields
- Material: steel
- High quality workmanship
- Diameter: 10 cm (4")
- Rubber bottom
- Incl. 1 mallet



**C Major**  
SETD4M1

**D Pentatonic**  
SETD4M2

**A Pentatonic**  
SETD4M3

SETD4M1	<b>C Major</b>	C5, D5, E5, F5, G5, A5, B5, C6	<b>Black</b>
SETD4M2	<b>D Pentatonic</b>	D5, E5, F#5, A5, B5, D6	<b>Purple</b>
SETD4M3	<b>A Pentatonic</b>	A5, B5, C#6, E6, F#6, A6	<b>Yellow</b>



# Melody Tongue Drum 5.5"

Meditative and harmonic sounds

The Sela Melody Tongue Drum 5.5" is a handy steel tongue drum with a diameter of just under 14 centimeters. With its warm and soothing sound, it is suitable for relaxation in everyday life as well as for the early musical education of children. Since all six tone fields of this model are on the pentatonic scale, a harmonic melody is always created when playing, without any "wrong" notes. Therefore, this instrument is recommended not only for experienced music lovers and professional sound therapists, but especially for beginners with no previous musical knowledge.

- 6 tone fields
- Material: steel
- High quality workmanship
- Diameter: 14 cm (5.5")
- Rubber feet
- Incl. 2 mallets & cotton bag



**A Major Pentatonic**  
SE 350

**B Major Pentatonic**  
SE 351

**C Major Pentatonic**  
SE 352

SE 350	<b>A Major Pentatonic</b>	A4, B4, C#5, E5, F#5, A5	Navy Blue
SE 351	<b>B Major Pentatonic</b>	B4, C#5, D#5, F#5, G#5, B5	White
SE 352	<b>C Major Pentatonic</b>	C5, D5, E5, G5, A5, C6	Black



# Melody Tongue Drum 6"

Meditative and harmonic sounds

The Sela Melody Tongue Drum 6" is a handy steel tongue drum with a diameter of just over 15 centimeters. With its warm and soothing sound, it is suitable for relaxation in everyday life as well as for the early musical education of children. Since the eight tone fields of the Sela Melody Tongue Drum 6" are all on a specific scale, a harmonic melody is always created when playing without any "wrong" notes. Therefore, this instrument is recommended not only for experienced music lovers and professional sound therapists, but especially for beginners with no previous musical knowledge.

- 8 tone fields
- Material: steel
- High quality workmanship
- Diameter: 15 cm (6")
- Rubber feet
- Incl. 2 mallets & cotton bag



**C Major**  
SE 360

**D Major**  
SE 361

**F Minor**  
SE 362

**G Minor**  
SE 363

SE 360	<b>C Major</b>	C5, D5, E5, F5, G5, A5, B5, C6	Black
SE 361	<b>D Major</b>	D5, E5, F#5, G5, A5, B5, C#6, D6	Navy Blue
SE 362	<b>F Min Pentatonic</b>	F4, G#4, Bb4, C5, D#5, F5, G#5, Bb5	Red
SE 363	<b>G Min Pentatonic</b>	G4, Bb4, C5, D5, F5, G5, Bb5, C6	White





# Melody Tongue Drum 10"

Meditative and harmonic sounds

The Melody Tongue Drum 10" is a handy steel tongue drum with a diameter of approx. 25 centimetres. With its warm and soothing sound, it is suitable for relaxation in everyday life as well as for the early musical education of children. The eight tone fields of each Sela Melody Tongue Drum 10" are on a specific scale. Since all the notes fit together harmoniously, a melodious sound is always created without any "wrong" notes. Therefore, this instrument is not only recommended for experienced music lovers and professional sound therapists, but especially for beginners without any previous musical knowledge.

- 8 tone fields
- Material: steel
- High quality workmanship
- Diameter: 25 cm (10")
- Rubber feet
- Incl. 2 mallets & cotton bag



**A Hirajoshi**  
SE 370

**D Akebono**  
SE 371

**C Golden Gate**  
SE 373

**C Pygmy**  
SE 374

SE 370	<b>A Hirajoshi</b>	A3, B3, C4, E4, F4, A4, B4, C5	Black
SE 371	<b>D Akebono</b>	D3, E3, F3, A3, A#3, D4, E4, F4	Navy Blue
SE 373	<b>C Golden Gate</b>	A3, C4, E4, G4, B4, C5, D5, E5	Dark Green
SE 374	<b>C Pygmy</b>	C4, D4, D#4, G4, A#4, C5, D5, D#5	Red



# Melody Tongue Drum 14"

Meditative sounds for at home, in the yoga studio or on the go

The Sela Melody Tongue Drum 14" is a medium-sized steel tongue drum with nine tone fields and a diameter of just under 36 centimetres. With its warm, long-lasting and soothing sound, it is suitable for relaxation in everyday life as well as for serious music-making or early musical education for children. It not only sounds particularly good, but with its matt surface it is also a chic eye-catcher – whether at home, in the office or in the yoga studio.

The tone fields of the Melody Tongue Drum 14 are on D minor scales, one of the most popular and accessible tunings for handpans and tongue drums. Since all the notes of the instrument fit together harmoniously, a melodious sound is always created when playing, without any "wrong" notes.

- 9 tone fields
- Material: steel
- High quality workmanship
- Diameter: 35 cm (14")
- Rubber feet
- Incl. 2 mallets & rucksack bag



**D Kurd**  
SE 380

**D Amara**  
SE 381

SE 380	<b>D Kurd</b>	D3 / A3, Bb3, C4, D4, E4, F4, G4, A4	Black
SE 381	<b>D Amara</b>	D3 / A3, C4, D4, E4, F4, G4, A4, C5	Navy Blue





# Unity Tongue Drum 13" 432Hz

Meditative sounds for at home, in the yoga studio or on the go

All Sela Unity Tongue Drum models are tuned to the fundamental frequency of 432 Hz (concert pitch A) and therefore do not harmonize with conventionally tuned instruments (440 Hz). However, they are ideal for use as a solo instrument or in combination with other instruments tuned to 432 Hz. Often used in sound therapy and meditation, Instruments tuned to 432 Hz are considered particularly suitable for relaxation, concentration and mindfulness.

- 11 tone fields
- Material: steel
- High quality workmanship
- Natural rope binding
- Diameter: 33 cm (13")
- Incl. 1 pair of felt mallets and 1 pair of rubber mallets
- Incl. bag with rucksack straps



**C Minor 432 Hz**  
SETD13U1

**C Major 432 Hz**  
SETD13U2

**C# Minor 432 Hz**  
SETD13U3

SETD13U1	<b>C Minor</b>	C3 / G3, Ab3, C4, D4, Eb4, F4, G4, Ab4, Bb4, C5	Black
SETD13U2	<b>C Major</b>	C3 / G3, A3, C4, D4, E4, F4, G4, A4, C4, D5	Dark Green
SETD13U3	<b>C# Minor</b>	C#3 / G#3, A3, B3, C#4, D#4, E4, F#4, G#4, A4, B4	Navy Blue





# Singing Bowls

Handmade and unique

Sela Harmony Singing Bowls are handmade masterpieces in the tradition of Tibetan singing bowls. They produce long-lasting, spherical sounds with a piercing fundamental and a broad, harmonious overtone spectrum. All Sela Harmony Singing Bowls are made in India, have a shimmering matte finish and stylish engraving on the inside. Sela Harmony Singing Bowls are available in seven different sizes, allowing you to experience different pitches and vibrational ranges.

## **For music, meditation and singing bowl therapy**

Sela Harmony Singing Bowls are suitable for making music as well as for meditation, yoga sessions and sound massages. Their soothing voice can help relieve stress, deeply relax and bring body and mind into harmony. Sela Harmony Singing Bowls can be played individually or combined with other singing bowls, Sela Handpans and other instruments to take listeners on a multi-layered sound journey.

Each Sela Harmony Singing Bowl comes with a useful set of accessories. The included mallet is particularly noteworthy, because it represents a combination of a classic felt mallet and a friction wood. The singing bowl can therefore be played with the round felt head or gently rubbed with the leather-covered handle and made to sing, whereby the sound of the instrument unfolds in different ways. A cotton bag with drawstring and red velour lining protects the singing bowl during transport, a felt ring ensures a secure stand and optimal vibration behavior when playing the Sela Harmony Singing Bowl.



# Harmony Singing Bowls

Handmade and unique

SE 260	Ø 12.0 cm / 4.7"	ca. 610 g
SE 261	Ø 15.0 cm / 6"	ca. 942 g
SE 262	Ø 17.0 cm / 6.7"	ca. 1160 g
SE 263	Ø 19.0 cm / 7.5"	ca. 1168 g
SE 264	Ø 22.0 cm / 8.7"	ca. 1514 g
SE 265	Ø 26.0 cm / 10.2"	ca. 2100 g
SE 266	Ø 29.0 cm / 11.4"	ca. 2925 g
SE 267	Ø 57-58 cm / 22.5"	ca. 14.500 g
SE 269	Ø 50 cm / 20"	ca. 10.500 g



## Features

- Handcrafted masterpieces
- Made in India
- Material: Brass
- Matte finish
- Combination mallet
- Large mallet (SE 267 & SE 269)
- Incl. cotton bag and felt ring
- Incl. cushion (SE 267 & SE 269)



Scope of delivery for SE 260-266



Scope of delivery for SE 267





# Singing Bowl Accessories



## Harmony Mallet 20

SEASBM20

- Beech wood
- Felt head
- Leather covered end
- Head Ø: 50 mm
- Handle Ø: 20 mm
- Length: 22 cm



## Harmony Mallet 30

SEASBM30

- Beech wood
- Felt head
- Leather covered end
- Head Ø: 60 mm
- Handle Ø: 30 mm
- Length: 22 cm



## Double Mallet

SE 278

- Beech wood
- 2 Felt heads:  
Ø 50 mm / Ø 40 mm
- Handle Ø: 12 mm
- Length: 40 cm



## Singing Bowl Felt Ring

- 13 cm - SEASBFR13
- 14 cm - SEASBFR14
- 16 cm - SEASBFR16
- 18 cm - SEASBFR18
- 22.5 cm - SEASBFR225



## Singing Bowl Cotton Bag

- 20 x 20 cm - SEASBB20
- 25 x 25 cm - SEASBB25
- 30 x 30 cm - SEASBB30
- 38 x 38 cm - SEASBB38
- 46 x 46 cm - SEASBB46



# Crystal Singing Bowls

Spherical and long lasting sounds

## Modern interpretation of the Tibetan Singing Bowl

Crystal singing bowls, like the traditional variants made of bronze or brass alloys, produce spherical, long-lasting sounds with a powerful fundamental and "singing", harmonic overtones. In direct comparison, the modern variant made of glass even resonates somewhat more clearly and significantly longer than its metallic counterpart. The material used is given excellent sound properties by a special manufacturing process in which glass is melted down and brought into the desired shape by a centrifuge. Visually, the instrument is rounded off by a chic frosted glass design with a rough, white surface.

## For music, meditation and singing bowl therapy

Sela crystal singing bowls are suitable for making music as well as for meditation, yoga sessions and sound massages. Their soothing voice can help relieve stress, deeply relax and bring body and mind into harmony. The Crystal Singing Bowls can be played individually or in combination with other singing bowls or other instruments, such as the Sela Handpans.

## Useful accessories included

The Sela Crystal Singing Bowls come with a wooden mallet specially designed for use with crystal singing bowls. With its handle made of Asian Shima wood, it lies extremely comfortably in the hand and its rubber head enables both the gentle striking and rubbing of singing bowls. In addition, an included silicone ring ensures a secure stand and optimal vibration behavior of the bowl - so it can unfold its full sound potential at any time.



# Crystal Singing Bowl Set - Frosted

7 Frosted Crystal Singing Bowls from 8 to 14 inch in 440 Hz

- 7 Singing Bowls from 8" - 14"
- Material: Quartz Crystal
- Frequency: 440 Hz
- Design: Frosted with rough texture
- Logo sticker on the inside
- Single bowls include 1 wooden mallet and 1 silicone ring
- Set incl. 1 wooden mallet, 2 silicone mallets and 7 silicone rings
- Total weight: approx. 26 kg



SECF8B	Ø 8" / 20 cm	B4
SECF9A	Ø 9" / 23 cm	A4
SECF10G	Ø 10" / 25 cm	G4
SECF11F	Ø 11" / 27.5 cm	F4
SECF12E	Ø 12" / 30 cm	E4
SECF13D	Ø 13" / 32.5 cm	D4
SECF14C	Ø 14" / 35 cm	C3
SECF-SET	Ø 8" - 14" / 20 - 35 cm	B4-C3

# Crystal Singing Bowl Set - Chakra

7 Chakra Crystal Singing Bowls from 8 to 14 inch in 432 Hz

- 7 Singing Bowls from 8" - 14"
- In correspondence to the 7 Chakras
- Material: Quartz Crystal
- Frequency: 432 Hz
- Design: Frosted with coloured gradients
- Logo sticker on the inside
- Single bowls include 1 wooden mallet and 1 silicone ring
- Set incl. 1 wooden mallet, 2 silicone mallets and 7 silicone rings
- Total weight: approx. 26 kg



SECCU8B	Ø 8" / 20 cm	B4	Violet	Crown Chakra
SECCU9A	Ø 9" / 23 cm	A4	Indigo	Third Eye Chakra
SECCU10G	Ø 10" / 25 cm	G4	Blue	Throat Chakra
SECCU11F	Ø 11" / 27.5 cm	F4	Green	Heart Chakra
SECCU12E	Ø 12" / 30 cm	E4	Yellow	Solar Plexus Chakra
SECCU13D	Ø 13" / 32.5 cm	D4	Orange	Sacral Chakra
SECCU14C	Ø 14" / 35 cm	C3	Red	Root Chakra
SECCU-SET	Ø 8" - 14" / 20 - 35 cm	B4-C3	All 7 Chakras	



# Crystal Singing Bowl Accessories



## Crystal Bowl Mallet Wooden Handle

SECBM1

- Schima wood handle
- Rubber head
- Diameter: 4 cm
- Length: 21 cm



## Crystal Bowl Mallet Half Coated Handle

SECBM2



## Crystal Bowl Mallet Fully Coated Handle

SECBM3

- Crystal mallet
- Silicone coating
- Diameter: 2 cm
- Length: 20 cm



## Crystal Singing Bowl Sleeve Set

SECSLS

- 7 Protective sleeves
- Material: Neoprene
- Colour: Wine red
- White Sela logo print
- Sizes: 14", 13", 12", 11", 10", 9", 8"



## Crystal Singing Bowl Bags

SECBB8 - For 8" bowls

SECBB10 - For 9 and 10" bowls

SECBB12 - For 11 and 12" bowls

SECBB14 - For 13 and 14" bowls

- Made of tear-resistant nylon
- Extra long carrying handles
- Padding: 15 mm
- Colour: grey
- Black Sela logo print
- Sizes: 8", 10", 12" and 14"

# Gongs

## Handmade Traditional Gongs

Sela Gongs are real masterpieces, handmade from a special bronze alloy or nickel-silver. They are available in sizes from 20 to 48 inches. The larger the model, the deeper and also more voluminous the sound when struck.

Sela Chau Gongs have a traditional shape with a rim that curves backwards. Sela Wind Gongs have an almost flat shape with the outer rim not bent backwards. Sela Symphonic Gongs have a slightly backwards curved rim and are made in Europe from beautiful nickel-silver.

Our Gongs are available in different finishes: Classic, Polished, Dark Moon, Lotus, Sun, Mantra, Yin&Yang and Flower Mandala. The Sela Lotus Gongs stand out due to their elegant lotus design, which is worked into the outer area. The Dark Moon Gongs are the purest form of gong, as there are no finishing touches added after the crafting of the instrument. Each of the designs has its own sound characteristics. Sun, Mantra, Yin&Yang and Flower Mandala are designed gongs that share the same base finish.

Gongs are an integral part of many cultures around the world and produce soothing, long-lasting, esoteric sounds. Depending on how hard, where and with what the Sela Gong is struck, different frequency ranges come to the fore. It can be played in a much more versatile way than it might seem at first.

Because of their relaxing effect, gongs are used in meditation and sound therapy, among other things, as their vibrations penetrate the whole body. But percussionists also like to use a gong as a special effect in musical and orchestral contexts.



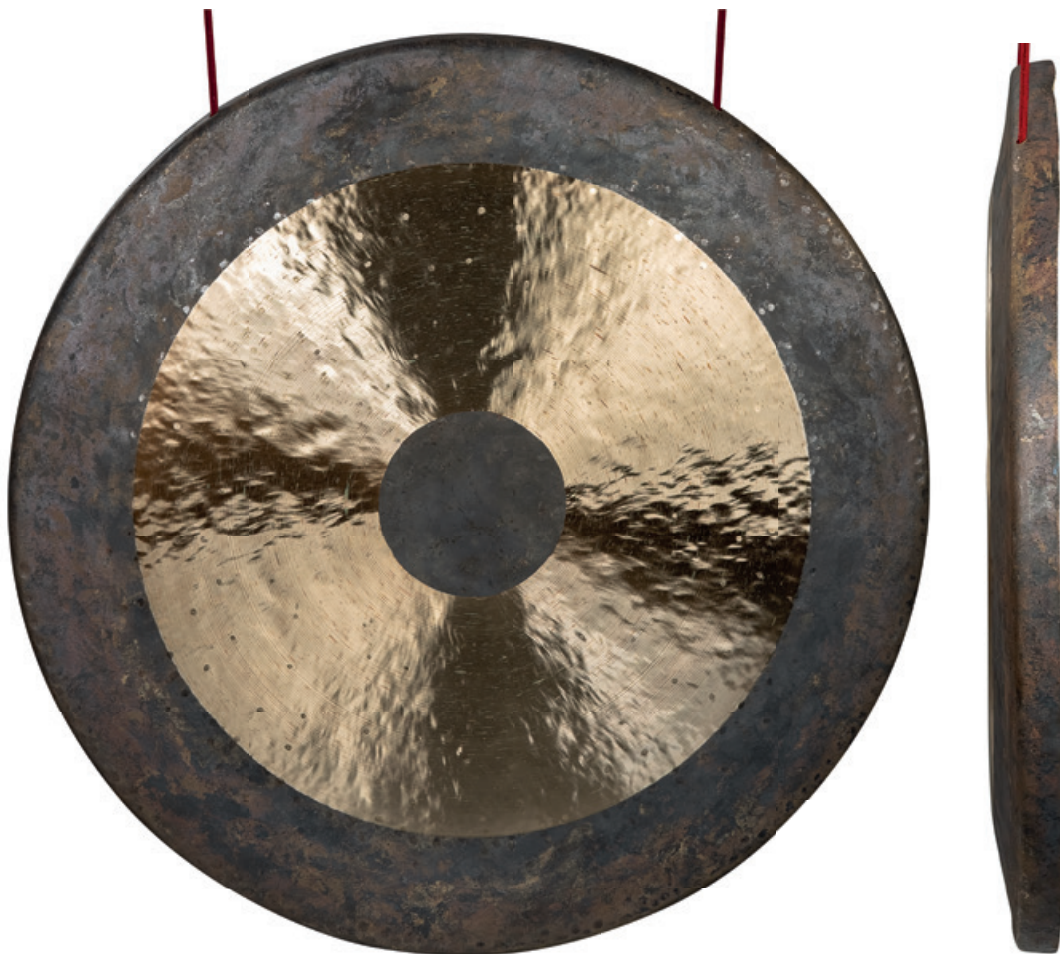


# Chau Gong - Standard (Classic)

Handmade traditional gong with wooden mallet and carrying bag

The Sela Chau Gong Classic has a traditional shape with a rim that curves backwards. It is untreated on the outer rim and in the middle and turned on the surface in between – this creates the characteristic look with the shimmering, matt-gold surface.

- Handmade masterpiece
- Material: special bronze alloy
- Classic gong design
- Engraved logo on the back
- Mallet with beech handle and fleece head
- Incl. black carrying bag



SEGO20CH	Ø 50 cm / 20"	ca. 3.4 kg
SEGO24CH	Ø 60 cm / 24"	ca. 6 kg
SEGO28CH	Ø 70 cm / 28"	ca. 7.8 g
SEGO32CH	Ø 80 cm / 32"	ca. 10.9 kg
SEGO36CH	Ø 90 cm / 36"	ca. 15.1 kg
SEGO40CH	Ø 100 cm / 40"	ca. 24.4 kg
SEGO44CH	Ø 110 cm / 44"	ca. 28.6 kg
SEGO48CH	Ø 120 cm / 48"	ca. 34.4 kg





# Chau Gong - Lotus

Handmade traditional gong in spiritual lotus design

The Sela Chau Gong Lotus has a traditional shape with a rim that curves backwards. Its surface is treated and turned to different degrees on the outer rim, in the middle and in the area in between, which alone ensures a very special, characteristic look with a partially shimmering, matt-gold finish. However, the Sela Chau Gong Lotus particularly stands out due to its elegant lotus design, which is worked into the outer area. The lotus flower is also known as the "flower of life" and has many spiritual meanings – among other things, it stands for purity of heart, creativity, wisdom and enlightenment.

- Handmade masterpiece
- Material: special bronze alloy
- Lotus design
- Engraved logo on the back
- Mallet with beech handle and fleece head
- Incl. black carrying bag



SEGO20CHL	Ø 50 cm / 20"	ca. 3.4 kg
SEGO24CHL	Ø 60 cm / 24"	ca. 6 kg
SEGO28CHL	Ø 70 cm / 28"	ca. 7.8 kg
SEGO32CHL	Ø 80 cm / 32"	ca. 10.9 kg
SEGO36CHL	Ø 90 cm / 36"	ca. 15.1 kg
SEGO40CHL	Ø 100 cm / 40"	ca. 24.4 kg
SEGO44CHL	Ø 110 cm / 44"	ca. 28.6 kg
SEGO48CHL	Ø 120 cm / 48"	ca. 34.4 kg

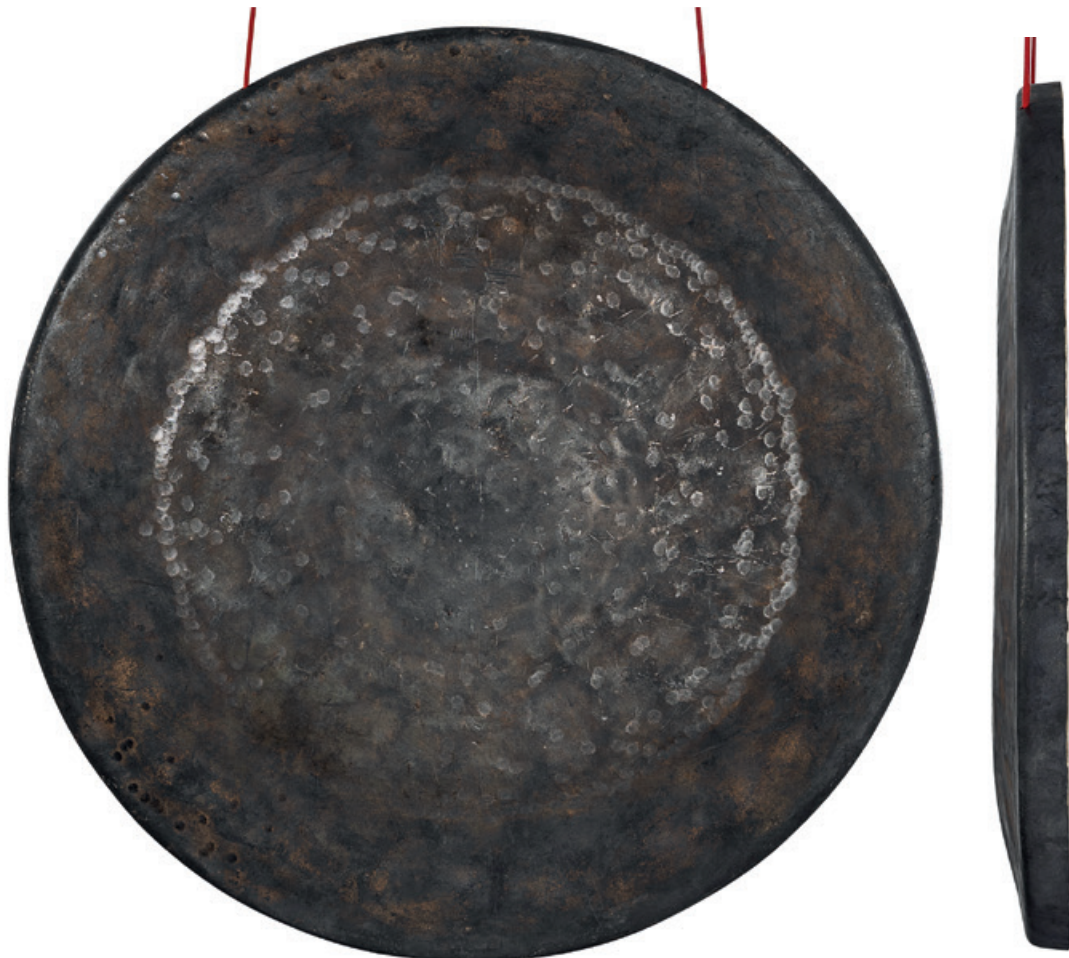


# Chau Gong - Dark Moon

Handmade untreated gong with mallet and carrying bag

As the surface of the Dark Moon gongs is completely untreated, they have some special visual and tonal features. These gongs have a natural and earthy sound with a rich and complex frequency spectrum. The untreated surface also gives the Dark Moon gongs a rustic and authentic look. The visible traces of hand hammering and the natural patina create a very special aesthetic and make each piece a unique work of art.

- Handmade masterpiece
- Material: special bronze alloy
- Untreated Dark Moon design
- Engraved logo on the back
- Mallet with beech handle and fleece head
- Incl. black carrying bag



SEGO20CHD	Ø 50 cm / 20"	ca. 3.4 kg
SEGO24CHD	Ø 60 cm / 24"	ca. 6 kg
SEGO28CHD	Ø 70 cm / 28"	ca. 7.8 g
SEGO32CHD	Ø 80 cm / 32"	ca. 10.9 kg
SEGO36CHD	Ø 90 cm / 36"	ca. 15.1 kg
SEGO40CHD	Ø 100 cm / 40"	ca. 24.4 kg
SEGO44CHD	Ø 110 cm / 44"	ca. 28.6 kg
SEGO48CHD	Ø 120 cm / 48"	ca. 34.4 kg



# Chau Gong - Sun

Handmade gong with Sun design

Sela Chau Gongs in the Sun design feature an untreated surface like on the dark moon gongs with a harmonious arrangement of concentric circles. The turned contours of the circles create an elegant, glossy finish that adds refined visual accents. The interplay between the matte base surface and the polished lines results in a timeless and calm aesthetic. Ideal for sound therapy, meditation, or as a decorative instrument.

- Handmade masterpiece
- Material: special bronze alloy
- Sun Design
- Engraved logo on the back
- Mallet with beech handle and fleece head
- Incl. black carrying bag



SEGO20CHS	Ø 50 cm / 20"	ca. 3.4 kg
SEGO24CHS	Ø 60 cm / 24"	ca. 6 kg
SEGO28CHS	Ø 70 cm / 28"	ca. 7.8 g





# Chau Gong - Mantra

Handmade gong with spiriutal Mantra design

The Sela Chau Gong in the Mantra design features darker, less glossy surface areas that contrast with the finely engraved patterns. Concentric rows of traditional mantra symbols create subtle, reflective highlights and a rich visual texture. At the center, the Om symbol forms the visual and spiritual focal point of the design. The circular arrangement represents repetition, focus, and inner balance. Ideal for sound therapy, meditation, or as a visually striking decorative instrument.

- Handmade masterpiece
- Material: special bronze alloy
- Mantra design
- Engraved logo on the back
- Mallet with beech handle and fleece head
- Incl. black carrying bag



SEGO20CHM	Ø 50 cm / 20"	ca. 3.4 kg
SEGO24CHM	Ø 60 cm / 24"	ca. 6 kg
SEGO28CHM	Ø 70 cm / 28"	ca. 7.8 g



# Chau Gong - Yin & Yang

Handmade gong with spiritual Yin & Yang design

The Yin-Yang Gong design features a polished metal surface with contrasting light and dark areas that define the iconic symbol. Subtle circular textures radiate from the center, adding depth and visual interest. The central Yin-Yang motif serves as both the visual and symbolic focal point, representing balance, harmony, and the interplay of opposites. Perfect for meditation, sound therapy, or as a striking decorative instrument.

- Handmade masterpiece
- Material: special bronze alloy
- Yin & Yang design
- Engraved logo on the back
- Mallet with beech handle and fleece head
- Incl. black carrying bag



SEGO20CHY	Ø 50 cm / 20"	ca. 3.4 kg
SEGO24CHY	Ø 60 cm / 24"	ca. 6 kg
SEGO28CHY	Ø 70 cm / 28"	ca. 7.8 g





# Chau Gong - Flower Mandala

Handmade gong with Flower Mandala design

The Sela Chau Gong in the Flower Mandala design features darker, less glossy surface areas that contrast with the finely engraved patterns. An intricate mandala design adds subtle, reflective highlights and a rich visual texture. At the center, the Sela symbol forms the visual focal point of the design. The circular arrangement represents repetition, focus, and inner balance. Ideal for sound therapy, meditation, or as a visually striking decorative instrument.

- Handmade masterpiece
- Material: special bronze alloy
- Flower Mandala design
- Engraved logo on the back
- Mallet with beech handle and fleece head
- Incl. black carrying bag



SEGO20CHF	Ø 50 cm / 20"	ca. 3.4 kg
SEGO24CHF	Ø 60 cm / 24"	ca. 6 kg
SEGO28CHF	Ø 70 cm / 28"	ca. 7.8 g



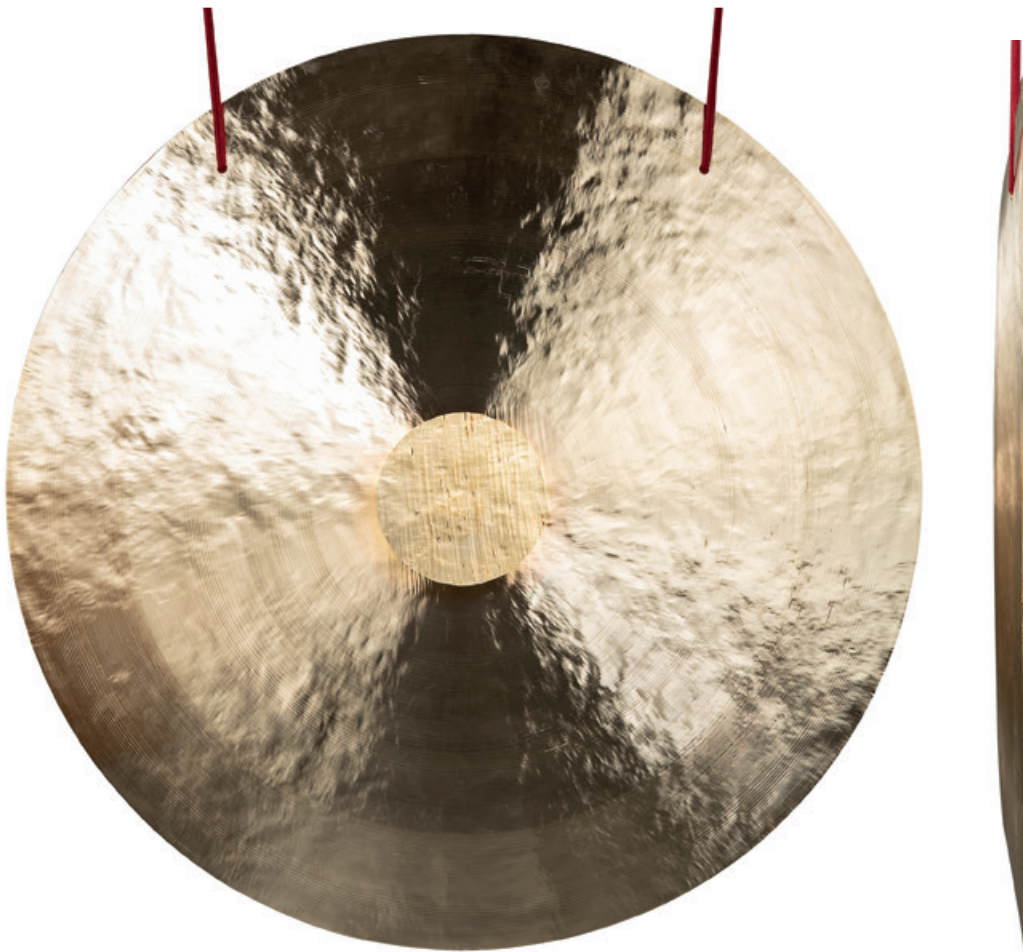


# Wind Gong - Standard (Polished)

Handmade flat gong with turned finish

The Sela Wind Gong Classic has an almost flat shape with the outer rim not bent backwards. It has a shimmering golden finish, with the outer rim, the middle and the area in between each treated or turned down to different degrees.

- Handmade masterpiece
- Material: special bronze alloy
- Golden, turned finish
- Engraved logo on the back
- Mallet with beech handle and fleece head
- Incl. black carrying bag



SEGO20WI	Ø 50 cm / 20"	ca. 2.4 kg
SEGO24WI	Ø 60 cm / 24"	ca. 5 kg
SEGO28WI	Ø 70 cm / 28"	ca. 6.6 g
SEGO32WI	Ø 80 cm / 32"	ca. 9.6 kg
SEGO36WI	Ø 90 cm / 36"	ca. 13.5 kg
SEGO40WI	Ø 100 cm / 40"	ca. 24.4 kg
SEGO44WI	Ø 110 cm / 44"	ca. 25.9 kg
SEGO48WI	Ø 120 cm / 48"	ca. 34.4 kg



# Wind Gong - Lotus

Handmade flat gong with spiritual lotus design

The Sela Wind Gong Lotus has an almost flat shape with the outer rim not curved backwards. Its surface is treated and twisted to different degrees on the outer edge, in the middle and in the area in between, which in itself provides a very special, characteristic look with a partially shimmering, matt-gold finish. However, the Sela Wind Gong Lotus stands out particularly because of its elegant lotus motif, which is worked into the outer area. The lotus flower is also known as the "flower of life" and has many spiritual meanings – among other things, it stands for purity of heart, creativity, wisdom and enlightenment.

- Handmade masterpiece
- Material: special bronze alloy
- Lotus design
- Engraved logo on the back
- Mallet with beech handle and fleece head
- Incl. black carrying bag



SEGO20WIL	Ø 50 cm / 20"	ca. 2.4 kg
SEGO24WIL	Ø 60 cm / 24"	ca. 5 kg
SEGO28WIL	Ø 70 cm / 28"	ca. 6.6 g
SEGO32WIL	Ø 80 cm / 32"	ca. 9.6 kg
SEGO36WIL	Ø 90 cm / 36"	ca. 13.5 kg
SEGO40WIL	Ø 100 cm / 40"	ca. 24.4 kg
SEGO44WIL	Ø 110 cm / 44"	ca. 25.9 kg
SEGO48WIL	Ø 120 cm / 48"	ca. 34.4 kg





# Wind Gong - Dark Moon

Handmade, untreated gong with mallet and carrying bag

As the surface of the Dark Moon Gongs is completely untreated, they have some special visual and tonal features. These gongs have a natural and earthy sound with a rich and complex frequency spectrum. The untreated surface also gives the Dark Moon gongs a rustic and authentic look. The visible traces of hand hammering and the natural patina create a very special aesthetic and make each piece a unique work of art.

- Handmade masterpiece
- Material: special bronze alloy
- Untreated Dark moon design
- Engraved logo on the back
- Mallet with beech handle and fleece head
- Incl. black carrying bag



SEGO20WID	Ø 50 cm / 20"	ca. 2.4 kg
SEGO24WID	Ø 60 cm / 24"	ca. 5 kg
SEGO28WID	Ø 70 cm / 28"	ca. 6.6 g
SEGO32WID	Ø 80 cm / 32"	ca. 9.6 kg
SEGO36WID	Ø 90 cm / 36"	ca. 13.5 kg
SEGO40WID	Ø 100 cm / 40"	ca. 24.4 kg
SEGO44WID	Ø 110 cm / 44"	ca. 25.9 kg
SEGO48WID	Ø 120 cm / 48"	ca. 34.4 kg





# Wind Gong - Sun

Handmade flat gong with sun design

Sela Wind Gongs in the sun design feature an untreated surface like on the dark moon gongs with a harmonious arrangement of concentric circles. The turned contours of the circles create an elegant, glossy finish that adds refined visual accents. The interplay between the matte base surface and the polished lines results in a timeless and calm aesthetic. Ideal for sound therapy, meditation, or as a decorative instrument.

- Handmade masterpiece
- Material: special bronze alloy
- Sun design
- Engraved logo on the back
- Mallet with beech handle and fleece head
- Incl. black carrying bag



SEGO20WIS	Ø 50 cm / 20"	ca. 2.4 kg
SEGO24WIS	Ø 60 cm / 24"	ca. 5 kg
SEGO28WIS	Ø 70 cm / 28"	ca. 6.6 g



# Wind Gong - Mantra

Handmade flat gong with spiritual mantra design

The Sela Wind Gong in the mantra design features darker, less glossy surface areas that contrast with the finely engraved patterns. Concentric rows of traditional mantra symbols create subtle, reflective highlights and a rich visual texture. At the center, the Om symbol forms the visual and spiritual focal point of the design. The circular arrangement represents repetition, focus, and inner balance. Ideal for sound therapy, meditation, or as a visually striking decorative instrument.

- Handmade masterpiece
- Material: special bronze alloy
- Mantra design
- Engraved logo on the back
- Mallet with beech handle and fleece head
- Incl. black carrying bag



SEGO20WIM	Ø 50 cm / 20"	ca. 2.4 kg
SEGO24WIM	Ø 60 cm / 24"	ca. 5 kg
SEGO28WIM	Ø 70 cm / 28"	ca. 6.6 g





# Wind Gong - Yin & Yang

Handmade flat gong with spiritual Yin & Yang design

The Yin-Yang Gong design features a polished metal surface with contrasting light and dark areas that define the iconic symbol. Subtle circular textures radiate from the center, adding depth and visual interest. The central Yin-Yang motif serves as both the visual and symbolic focal point, representing balance, harmony, and the interplay of opposites. Perfect for meditation, sound therapy, or as a striking decorative instrument.

- Handmade masterpiece
- Material: special bronze alloy
- Yin & Yang design
- Engraved logo on the back
- Mallet with beech handle and fleece head
- Incl. black carrying bag



SEGO20WIY	Ø 50 cm / 20"	ca. 2.4 kg
SEGO24WIY	Ø 60 cm / 24"	ca. 5 kg
SEGO28WIY	Ø 70 cm / 28"	ca. 6.6 g





# Wind Gong - Flower Mandala

Handmade flat gong with flower mandala design

The Sela Wind Gong in the Flower Mandala design features darker, less glossy surface areas that contrast with the finely engraved patterns. An intricate mandala design adds subtle, reflective highlights and a rich visual texture. At the center, the Sela symbol forms the visual focal point of the design. The circular arrangement represents repetition, focus, and inner balance. Ideal for sound therapy, meditation, or as a visually striking decorative instrument.

- Handmade masterpiece
- Material: special bronze alloy
- Flower Mandala design
- Engraved logo on the back
- Mallet with beech handle and fleece head
- Incl. black carrying bag



SEGO20WIF	Ø 50 cm / 20"	ca. 2.4 kg
SEGO24WIF	Ø 60 cm / 24"	ca. 5 kg
SEGO28WIF	Ø 70 cm / 28"	ca. 6.6 g



# Symphonic Gongs

Hand-hammered symphonic gong with cotton cover

The Sela Symphonic gong has a traditional shape with a rim that curves backwards. It is dark-colored on the outer edge and has a golden sheen in the middle. The gong's characteristic appearance with its many shimmering shades of color is created by the intense heating during tuning and shaping.

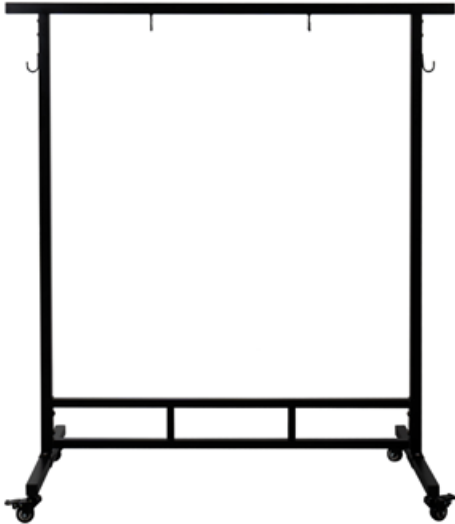
- Handmade masterpiece from Spain
- Material: nickel silver
- Slightly curved rim
- Shimmering design by heat treating
- Cotton sleeve included
- Engraved logo on the back



SEGO20SY	Ø 50 cm / 20"	ca. 2 kg
SEGO24SY	Ø 60 cm / 24"	ca. 3.6 kg
SEGO38SY	Ø 95 cm / 38"	ca. 12.1 kg

# Gong Stands

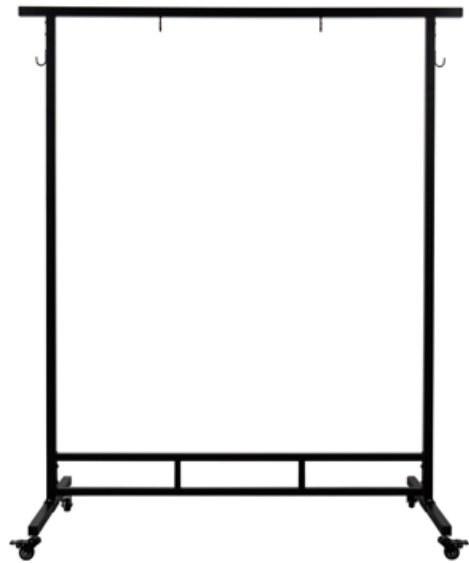
Solid hold for your gong



## Gong Stand 28" to 34"

SEGOST1

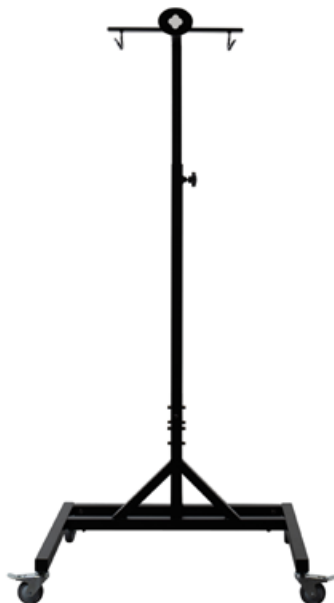
- Material: black powder-coated steel
- Suitable for gongs from 28" to 34" diameter
- Two additional hooks on the sides for accessories
- Castors on the feet
- Two castors with locking brakes
- Allen key for assembly



## Gong Stand 36" to 44"

SEGOST2

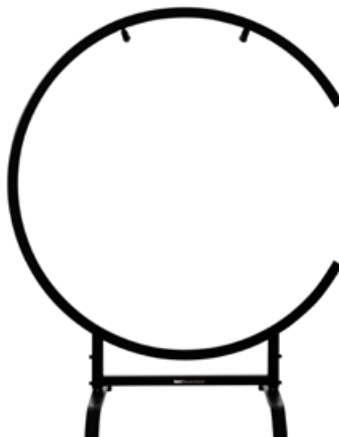
- Material: black powder-coated steel
- Suitable for gongs from 36" to 44" diameter
- Two additional hooks on the sides for accessories
- Castors on the feet
- Two castors with locking brakes
- Allen key for assembly



## Gong Stand Pro - max. 40"

SEGOSTP1

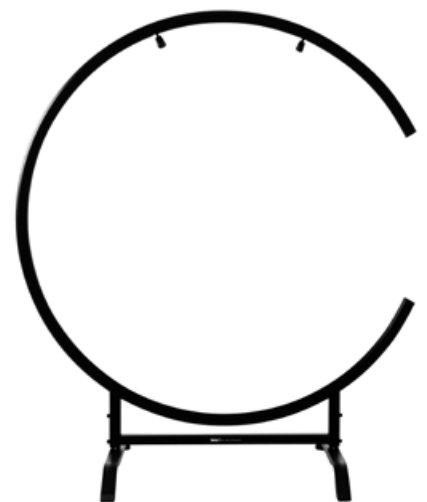
- Black powder-coated steel
- For gongs up to 40" diameter
- Plastic-coated hooks
- Castors with locking brakes
- Fixed feet for changing
- Allen key for assembly



## Gong Tablestand round 24"

SEGOSTR1

- Black powder-coated steel
- Stand for use on the table or floor
- For gongs up to 24" diameter
- Foam padded hooks
- Plastic inserts on the feet
- Allen key for assembly



## Gong Tablestand round 28"

SEGOSTR2

- Black powder-coated steel
- Stand for use on the table or floor
- For gongs up to 28" diameter
- Foam padded hooks
- Plastic inserts on the feet
- Allen key for assembly



# Gong Bags

Nylon gong bags with zipper and 2 handles



SEGOB20	Ø 50 cm / 20"
SEGOB24	Ø 60 cm / 24"
SEGOB28	Ø 70 cm / 28"
SEGOB32	Ø 80 cm / 32"
SEGOB36	Ø 90 cm / 36"
SEGOB40	Ø 100 cm / 40"
SEGOB44	Ø 110 cm / 44"
SEGOB48	Ø 120 cm / 48"

# Harmony Noah Bells

Traditional, handcrafted bells from India

The Noah Bell, also called 'khadki', has its roots in the sacred traditions of Indian monasteries and reflects centuries of spiritual and artisan heritage. The bells are formed by skilled artisans from sheets of iron and coated with molten brass. Each bell undergoes a deliberate aging process on its outer surface. This process creates a unique look that reflects the passing of time. Beyond its physical form, the Noah Bell is a timeless symbol that connects people to India's rich cultural heritage and offers a deep connection to history and spirituality.

- Handmade masterpieces from India
- Made from brass coated iron sheets
- Soothing, meditative sound with long sustain
- Perfect for meditation, sound therapy and yoga
- Combine more bells for great harmonies
- Including rubber mallet



## Noah Bells - Single

SEHB5D	Size 5: 3" / 8 cm	Note: D
SEHB6B	Size 6: 3.75" / 9,5 cm	Note: B
SEHB7A	Size 7: 4" / 10 cm	Note: A
SEHB8FS	Size 8: 4.75" / 12 cm	Note: F#
SEHB9E	Size 9: 6" / 15 cm	Note: E
SEHB10D	Size 10: 6.5" / 16 cm	Note: D
SEHB11B	Size 11: 7.75" / 19.5 cm	Note: B
SEHB12G	Size 12: 9" / 23 cm	Note: G
SEHB13D	Size 13: 10.5" / 26.5 cm	Note: D

## Noah Bells - 3 Bell Sets

SEHBS1	Sizes: 12/11/10 (9"/7.75"/6.5")	G Maj (G4-B4-D5)
SEHBS2	Sizes: 12/11/10 (9"/8"/6.5")	G Min (G4-Bb4-D5)
SEHBS3	Sizes: 10/8/7 (6.5"/4.75"/4")	D Maj (D5-F#5-A5)

# Tingshas

Traditional Tibetan cymbals

Tingshas (or cymbals) are traditional Tibetan instruments that are mainly used in meditation, sound therapy and as musical offerings in spiritual rituals. Striking the two sound discs together produces a long-lasting, clear and penetrating sound that flows from the head through the whole body. Thanks to their robust construction, Sela Tingshas retain their sound quality even with frequent use. Both beginners and experienced users will quickly have an outstanding sound experience with the cymbals

- Made in India
- Bronze sound discs
- Brown suede strap
- Diameter: 7.5 cm
- Strap length approx. 50 cm
- Weight: 380 g



**Sela Tingshas**  
SETIN1





# Ocean Drums

A musical journey into the depths of the ocean

The Ocean Drum, also known as the Sea Drum, is a fascinating percussion instrument that puts the magic of the ocean in the hands of the player. Its peculiarity lies in its unique construction, which allows it to acoustically recreate the sounds of waves and tides. A gentle roar of the surf, crashing waves in stormy seas, and everything in between – this drum gives you a musical ticket to the world of the oceans.

- Beech wood frame
- Drumhead 1: synthetic
- Drumhead 2: natural skin (sheep)
- Filling: plastic and metal beads
- Closable opening for filling or emptying
- Available in sizes from 30 to 55 cm



Item-No.	Size
SEOD30	Ø 30 cm / 12"
SEOD40	Ø 40 cm / 16"
SEOD45	Ø 45 cm / 18"
SEOD50	Ø 50 cm / 20"
SEOD55	Ø 55 cm / 22"



# Venti Chimes

Elemental Chimes with bamboo body and 8 tuned metal rods

Sela Venti Chimes create clear, spherical tones that support relaxation and focus. They are well-suited for meditation, yoga, and sound therapy, as well as for musical applications, and can be easily combined with instruments such as singing bowls, gongs, handpans, tongue drums, or even acoustic guitars. The beautifully rounded bamboo body, together with the finely engraved element design and discreet Sela logo, makes the Venti Chime an elegant yet unobtrusive visual addition to home patios, studios, and sound rooms.

- Wooden body made of bamboo
- 8 metal rods (chimes)
- Wind plate in Sela shape

- Red cord with metal ring for hanging
- Transport bag included
- Dimensions: 16.6 cm x 6.5 cm



**Water**  
SEVB1



**Fire**  
SEVB2



**Earth**  
SEVB3



**Air**  
SEVB4



# Harmony Wind Chimes

Atmospheric sound tubes for meditation, sound healing and more

Sela Harmony Chimes are available with a choice of seven or nine tones and with walnut or beech wood. In the walnut models, the sound tubes are anodized black for a particularly mysterious, elegant look, while the bars of the more classic and discreet beech wood version are silver-coloured. The Sela Harmony Chimes come with a padded carrying bag, a soft velvet insert for wrapping the chimes and the mallet, which has a beechwood handle and a soft wool head.

- 7 or 9 Notes: C5 D5 E5 G5 A5 C6 D6 (E6, G6)
- NT: Tubes: silver, Frame: beech wood, natural
- DK: Tubes: black, Frame: walnut wood, dark
- Including: Beech mallet with wool tip
- Velvet insert and padded carrying bag
- Dimensions: 16.6 cm x 6.5 cm



**Chimes Natural 7**  
SECH7NT



**Chimes Natural 9**  
SECH9NT



**Chimes Dark Walnut 7**  
SECH7DK



**Chimes Dark Walnut 9**  
SECH9DK





# Rain Maker

Soothing sounds of rain for relaxation and meditation

The new Sela Rain Makers are made from high-quality steamed beech wood. The steaming process improves the hardness and durability of the bench and also gives it its characteristic warm color. Each instrument features carefully rounded and polished edges, ensuring a smooth, comfortable feel in the hands. The top and bottom of the Rain Maker are covered with a soft layer of cork, which ensures a secure and cushioned stand and protects the wood. The Rain Maker is filled with many small beads which, when moved, start to ripple through the instrument, creating a sound reminiscent of rain.

- Housing made from steamed beech wood
- Special beads for a distinctively clear sound
- Hexagonal design with rounded edges
- Length: 52 cm, Width: 11 cm
- Sound duration: approx. 6 min
- Made in India



**Rain Maker - 6 min**  
SERMM3



# Point of sale / Merchandise



**Sela Barstool**  
**SEBS1**

- Sturdy metal frame
- Material: Artificial Leather
- Diameter: ø 35.5 cm
- Height: 76.5 cm



**Sela Lanyard**  
**SE 172**





[instagram.com/selapercussion](https://www.instagram.com/selapercussion)



[facebook.com/selapercussion](https://www.facebook.com/selapercussion)



[youtube.com/selapercussion](https://www.youtube.com/selapercussion)



[selapercussion.com](https://www.selapercussion.com)

# Sela®

the soul of sound

Sela® is a trademark of HAGE Musikverlag GmbH & Co. KG  
Eschenbach 542 • 91224 Pommelsbrunn • Germany

Phone +49 (0)9154-916940 • Fax +49 (0)9154-916941 • Email: [info@selapercussion.com](mailto:info@selapercussion.com)

All features are subject to change without notice. Not responsible for typographic errors.  
Subject to mistakes, printing errors, delivery options and changes excepted. With publication of this catalog all previous editions become invalid.  
This catalog is valid from January, 2025. Our General Terms and Conditions apply.